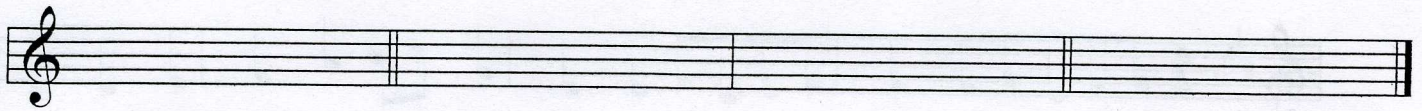


Sample Undergraduate Placement Examination

1. Write the key signatures for the keys indicated below



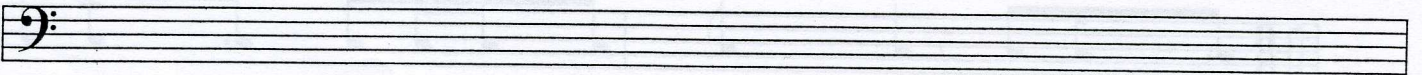
Db Major

c# minor

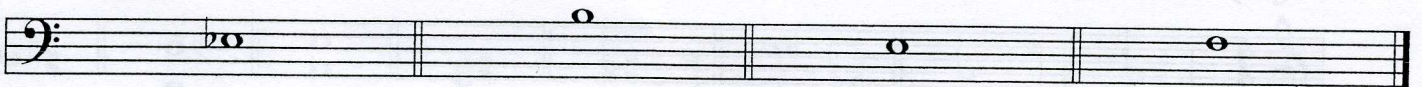
Relative minor
of G Major

Parallel Major of
of B minor

2. Using a key signature, write an ascending and descending f# melodic minor scale.



3. Construct the intervals above or below the given note as indicated.



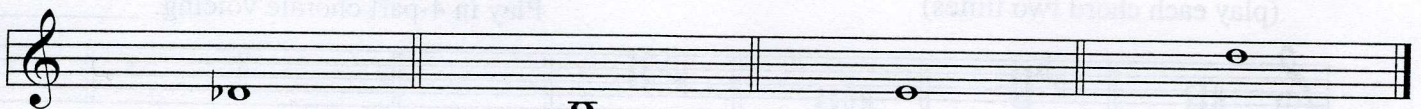
Perfect 5th above

Minor 6th below

Augmented 4th above

Major 6th above

4. Construct a triad on each of the root notes given below.



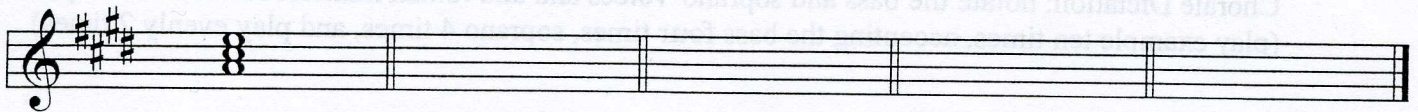
Major

minor

Augmented

diminished

5. Construct the indicated chords in the key of E major.



I

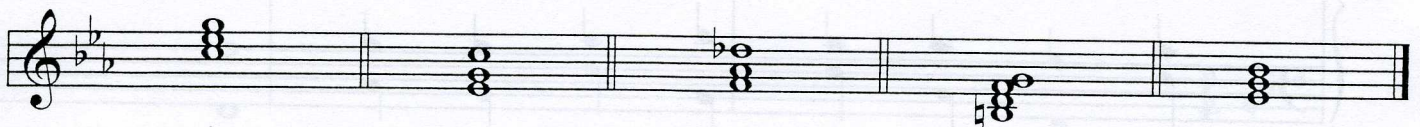
IV

ii6

V4
3

vi

6. Identify the roman numeral and inversion symbols (where relevant) in the key of c minor.



i

Sample Undergraduate Musicianship Examination

Melody Dictation

(play entire exercise once; mm. 1-2 four times; entire exercise once; 3-4 four times, entire exercise once)



Rhythm Dictation

(sing entire exercise on "tah" six times)



Interval Recognition, 1-4 melodic, 5-8 harmonic (all simple intervals up to an octave)

(play each interval two times)



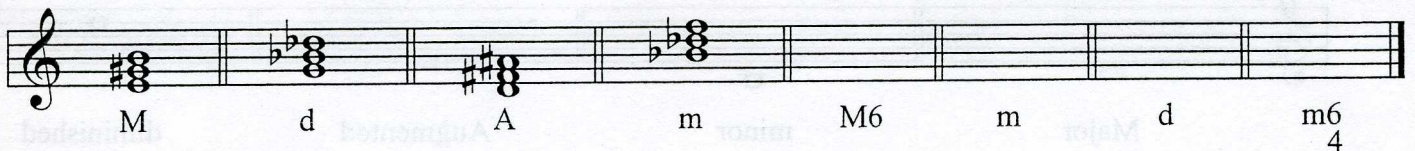
P4 P5 m6 m3 M3 P5 m7 M2

Triad Recognition, 1-4 root position, close position triads: M, m, A, d

5-8 open position, four-part chorale style: M, M6, M6/4; m, m6, m6/4, d, d6; A

(play each chord two times)

Play in 4-part chorale voicing. _____



M d A m M6 m d m6/4

Chorale Dictation: notate the bass and soprano voices and add roman numeral and inversion symbols.

(play example ten times, accenting the bass four times, soprano 4 times, and play evenly 2 times)



I I V7 I IV I ii6 V7 I