

**ANNUAL REPORT
TO DONORS
FISCAL YEAR
2014-2015**

50TH ANNIVERSARY



**Stony Brook
Foundation**

*A Foundation
for Excellence Since 1965*





3

GOING FAR Letter from President Samuel L. Stanley Jr. & Foundation Chair Richard L. Gelfond '76

4

FUNDRAISING REPORT FY 2014-2015

6

SOCIAL MOBILITY

12

TRANSLATIONAL AND BASIC RESEARCH

18

FUNDRAISING REPORT FY 2014-2015

20

SUSTAINABILITY AND CONSERVATION

26

ADVANCING OUR COMMUNITY

30

FOSTERING MOMENTUM Letter from Executive Director Dexter Bailey Jr.

32

FUNDRAISING PERFORMANCE FISCAL YEARS 2011-2015

34

EMPOWERING OUR MISSION

4

FAR BEYOND *With the support of donors like you, Stony Brook University is uniquely positioned to continue fulfilling our mission to foster ambitious ideas, pursue imaginative solutions and deliver exceptional leadership for our community, nation and world.*



Samuel L. Stanley Jr., MD
President
Stony Brook University

GOING FAR

Since its founding, Stony Brook University has been at the vanguard, continually pushing the boundaries of knowledge. And now is no different. Building on our strengths in science, technology, engineering, mathematics and medicine—and with a deep dedication to the arts and humanities—the Stony Brook community is passionately engaged in the most pressing issues of our time thanks in large part to your contributions.

With your support, our faculty's work leads to ground-breaking research and teaching that attracts the best and brightest students. And our students don't just learn – they do. Stony Brook is one of only 10 institutions recognized by the National Science Foundation for combining research with undergraduate education, forging graduates prepared for our ever more complex and connected world. It's an education that pays off: not only does *Consumers Digest* rank Stony Brook fifth among public colleges and universities for value, a Stony Brook education prepares students to succeed in fields desperate for talent.

And many of our students come to Stony Brook to fulfill the dream of a top education against all odds. We are incredibly proud that Stony Brook is ranked third among the Association of American Universities in social mobility; it is our donors who are key to this success because you help us create a unique support system that empowers students to overcome economic disadvantage and truly flourish.

We are also very proud to mark an exciting milestone for the Stony Brook Foundation this year. For a half-century, the Foundation has invested in faculty and student scholarships with gifts from friends and alumni of the University. In the next 50 years, the Foundation is poised to help us take Stony Brook even further.

Thank you for all that you do for Stony Brook. We've had an extraordinary year, and our success will only continue to exceed expectations because of generous donors like you.



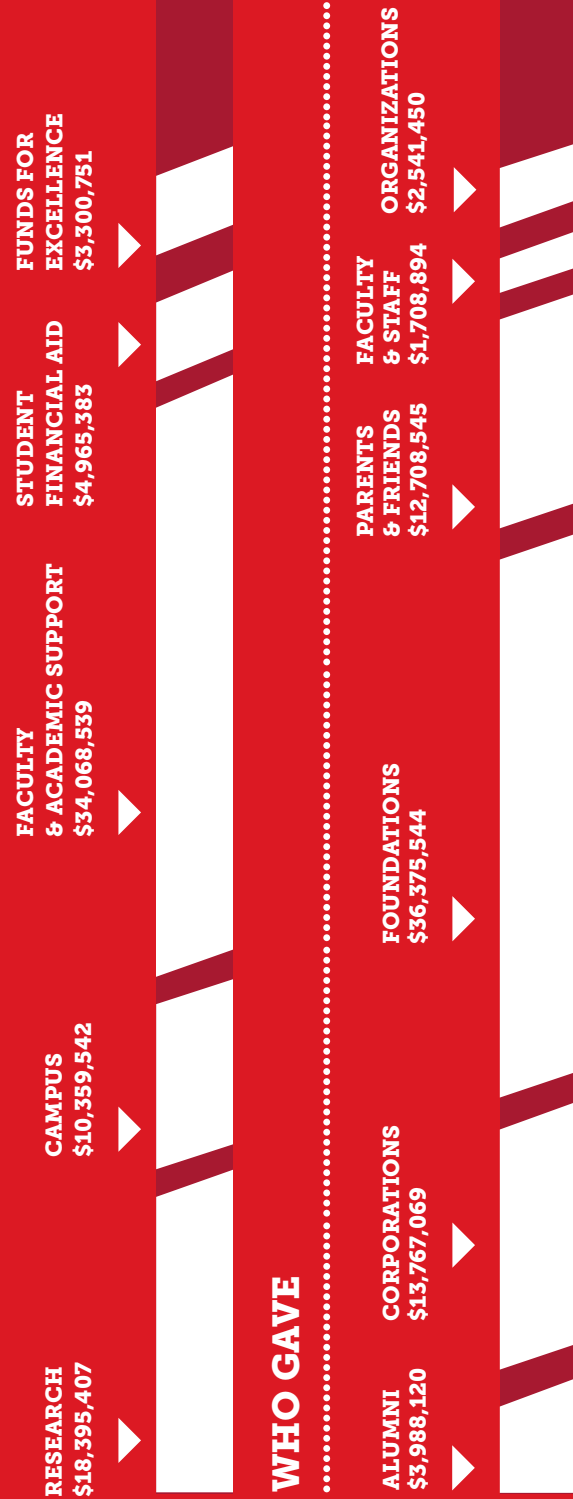
Richard L. Gelfond '76
Chair, Board of Trustees
Chief Executive Officer, IMAX

FUNDRAISING REPORT FY 2014-2015

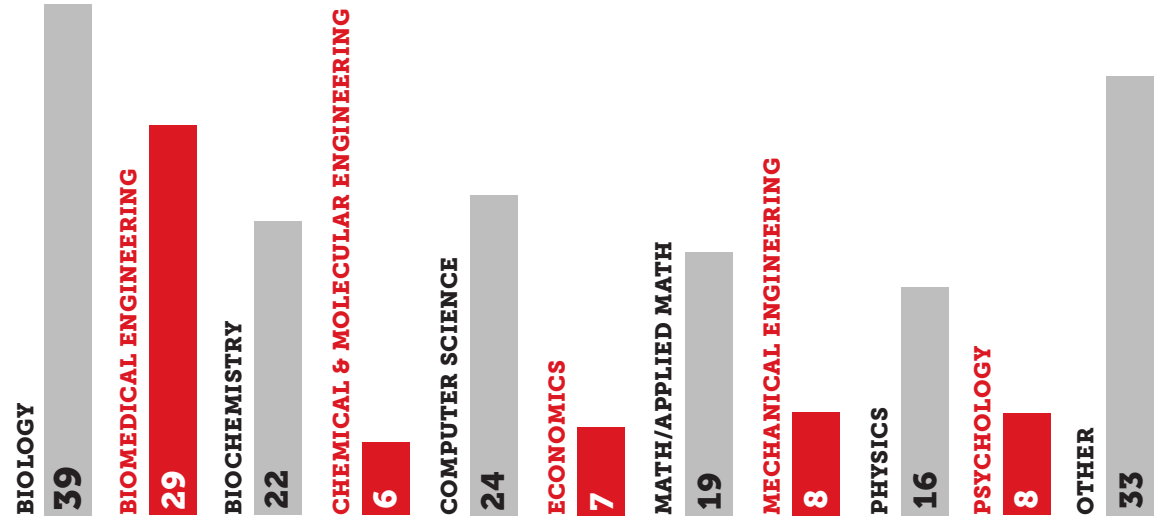
TOTAL FISCAL YEAR FUNDRAISING

\$71,089,622

GIFTS DESIGNATED



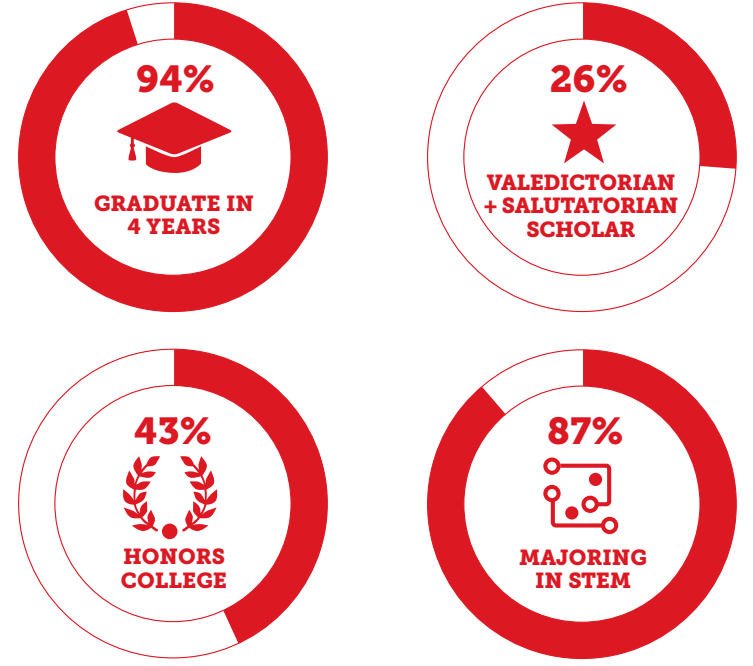
WHO GAVE



FOUNDATION TRUSTEE SCHOLARS: BY MAJOR

Each year since 2000, the Stony Brook Foundation has hosted the Stars of Stony Brook Gala, which has raised critical funds for Stony Brook's various centers of excellence and nearly \$40 million for Foundation Trustee Scholars.

FOUNDATION TRUSTEE SCHOLARS: 211 BRIGHTEST STARS OF STONY BROOK



SOCIAL MOBILITY

7

“I’ve been given a tremendous opportunity to be mentored and to carry out important scientific research. Coming from a poor neighborhood, it’s an opportunity that otherwise would not have been afforded to me.”

Luis Ramirez, Class of 2017, Electrical Engineering Major from Brooklyn NY

WE SEE ONLY POSSIBILITIES. While many are being priced out of a college degree, Stony Brook University offers one of the world's top educations at a remarkable value. Our doors are open to all those who share keen intelligence, deep curiosity and restless aspiration – regardless of financial means.

In 2014, Science magazine reported, "The United States has both the lowest mobility and highest inequality among all wealthy democratic countries." Stony Brook is setting the standard for how universities can help reverse this grim statistic by transforming the lives of individuals and their communities. And we have the results to prove it. Nearly 80 percent of our economically disadvantaged students graduate within six years, one of the highest rates in the country, and with a first-year retention rate of 97 percent.

Underlying Stony Brook's success is a firm commitment to providing a dedicated educational and social support system that enables all our students to thrive. And thanks in large part to donors like you, 42 percent of our students graduate with zero debt, empowering them to pursue career passions rather than just high salaries and offering them the freedom to attend graduate and professional schools without the burden of undergraduate debt.

ABOUT

67% of our students come from families earning less than \$75,000 a year.

Stony Brook is the sixth most selective public research university among the Association of American Universities.

In 1990, the U.S. ranked first in the world in 4-year degree attainment among 25-34 year olds; today, the U.S. ranks 12th. *OECD Education at a Glance '13*

Only 1/3 of children from low-income families at or below the poverty line attend a college and fewer graduate. *US Dept. of Education, '12*

Students from low-income families who earn 4-year degrees are 80% less likely to become poor. *The Future of Children, '13*

DELIVERING EXCEPTIONAL VALUE

Stony Brook has kept its promise to students and families across the state, widening the circle of opportunities that would otherwise be closed to so many.

For the 2013-2014 academic year, Stony Brook's tuition and fees for in-state undergraduates was the third lowest of all AAU public universities. *Consumer Reports* ranked Stony Brook #5 as offering the most academic value per dollar. Kiplinger also recognized us as one of the 30 best values in public colleges and universities.

Our donors' role in giving disadvantaged students a head start is undeniable. Over 30 years, the return on investment in a Stony Brook education is \$1,023,000 – 16th in the nation, according to Payscale.com.

PROVIDING A LEG UP

Accelerating social mobility requires much more than money for tuition and expenses. Many underprivileged students are gifted with strong intellect but lack the educational background and social support to deliver on their potential. Our commitment extends to providing the foundational programs that will allow these students to flourish.

One of our most successful Equal Opportunity Program initiatives is the Summer Academy, which prepares students for their first year in college. It's an intensive

five-week curriculum that focuses on math, writing, philosophy, study skills and time management. Following this rigorous course of study, 90 percent of the students are successful in college-level math classes. This remarkably effective program is free to all participants and includes housing, food and books.

The Summer Academy is only one example of how Stony Brook is accelerating social mobility by providing a practical model that has been adopted by other colleges and universities to help all students go far beyond the expected.

HOWIE KLEIN '69

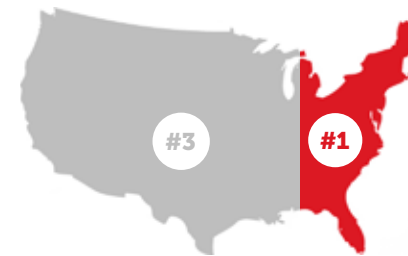
When Howie Klein '69 was chairman of the University's Student Activity Board in the late 60s, he booked The Who, Janis Joplin, Joni Mitchell and Jimi Hendrix to play at the Stony Brook gym. At the time, few could predict that they would become rock legends or that Klein would eventually become an executive at Warner Bros. Records. This year, Howie bequeathed \$1 million for an endowed scholarship fund for economically disadvantaged undergraduates. "I couldn't imagine a better way to invest my money," he said. "It amazes me how committed the Equal Opportunity Program / Advancement on Individual Merit students are toward changing their lives. And in the process of changing their lives, some of these students are going to help change society."

ENERGIZING TOMORROW'S ENGINEERS

Few undergraduates, particularly those with limited financial resources, can imagine the day-to-day life of a career scientist. Stony Brook's Explorations in STEM Research program provides hands-on research experience and opens doors for tomorrow's engineers and scientists.

Thanks to PSEG's generous corporate sponsorship, 16 Stony Brook undergraduates with high potential but low exposure to research are participating in a 10-week paid summer research opportunity. The company hopes that these students are inspired to pursue future careers in energy. Luis Ramirez, a sophomore, is grateful for their support. "I've been given a tremendous opportunity to be mentored and to carry out important scientific research. Coming from a poor neighborhood, it's an opportunity that otherwise would not have been afforded to me."

AAU SOCIAL MOBILITY INDEX



Stony Brook is ranked #3 in the United States and #1 in the East United States in social mobility among public research universities in the American Association of Universities (AAU)

STONY BROOK SERVES 25,272 OF NEW YORK'S MOST DESERVING STUDENTS

39%

In-State NY students receiving federal aid with family incomes below \$30,000

76%

First-time, full-time students receiving financial aid

80%

Still with unmet financial needs of \$6,800 per year on average

SOCIAL MOBILITY

TRANSLATIONAL AND BASIC RESEARCH

SUSTAINABILITY AND CONSERVATION

REACHING FOR THE STARS

More than \$2.2 million was raised at this year's Stars of Stony Brook Gala, bringing the cumulative total of this annual event to nearly \$40 million raised for student scholarships and to advance various academic programs.

This year's Gala featured Stony Brook's Center for Men and Masculinity. The Center brings together researchers, practitioners, and activists to develop and enhance projects focusing on boys and men to ultimately redefine gender relations and foster greater social justice.

"We're not going to make it unless women and men work together for gender equality," Michael Kimmel, the Center's Director, Distinguished Professor and author of more than 20 books including *Guyland*, *The Gendered Society* and *Manhood in America*, told the packed event.

ANTHONY BONGIORNO '81

Inspired by his daughter's interests, Bongiorno wanted to empower other young women to pursue a science education when he established the Anthony M. Bongiorno Endowed Scholarship for Women in Science with a \$130,000 gift. He also wanted to give back to his alma mater and have a positive impact in his community. "I've achieved all three with this endowment," Bongiorno said. "This endowment is part of the lesson my parents imparted to me to make a difference in my community and to care about other people."

BLACK AND LATINO ALUMNI NETWORK

Members of the Black and Latino Alumni Network are well aware of the tremendous difference that financial aid made to their education and success. To help others who share similar backgrounds, struggles and

ambitions, the Network members have created the Black and Latino Alumni Network Endowed Scholarship with the goal of raising at least \$25,000 by June 30, 2017.

STEVEN ALLARD '77

As a Navy veteran, Allard remembers the difference that the GI Bill and a veteran scholarship from the State of New York made to his life. Now with a \$25,000 donation he is giving back by establishing a scholarship fund for full-time students who are veterans of the U.S. Armed Forces. "It's wonderful to have the ability to pay back an institution that certainly had a lot to do with my career success."

JOE CAMPOLO '94 & SCOTT MIDDLETON '84

Campolo and Middleton are both former board members of the Stony Brook Alumni Association. Today they are law partners at Campolo, Middleton & McCormick, LLP and each donates generously to the University to help students with the potential to thrive as winners.

Established with donations of \$150,000 each, The Joseph N. Campolo Award for Legal Studies is awarded to a law student who has demonstrated a commitment to public service, and The Middleton Family Student-Athlete Alumni Award provides scholarship support to a current Stony Brook student-athlete.

Both Campolo and Middleton know a thing or two about winning. According to the Long Island Press' "Bethpage Best of Long Island 2015" – the region's largest business and professional awards program – Campolo was voted the best lawyer on Long Island and their firm was named the "Best Law Firm on Long Island."

IN FISCAL YEAR 2015 STONY BROOK FOUNDATION DISPERSED

\$5,451,226

IN STUDENT SCHOLARSHIPS

TRANSLATIONAL AND BASIC RESEARCH

“Without reliable, significant support, America’s leadership in scientific discovery is in jeopardy.”

President Samuel L. Stanley Jr.

WE ARE THE EXPLORERS WHO KNOW NO BOUNDARIES. *Our world demands ambitious ideas, imaginative solutions and exceptional leadership to make a positive impact on our state, country and world. But research that finds practical answers to our big problems requires strong intellect, hard work and a willingness to fail. It's a type of inquiry that has unique opportunities with universities and governments, both of which have historically been productive environments for high-risk investigations because they exist without the pressure of short-term profits.*

As government support shrinks, our donors are now more important than ever. You enable us to continue making discoveries and innovations through the type of curiosity-driven research that has led to humankind's greatest inventions. You empower us to make the most of our roots and strengths in the fields of science, technology, engineering, math and medicine, where we have earned not only an international reputation but also an ability to provide unparalleled, hands-on opportunities.

This year, Stony Brook University delivered incredible discoveries that are the result of years of learning, dedication and tenacity; and we are proud to be one of only 10 universities nationwide recognized by the National Science Foundation for combining research with undergraduate education. Today, as always, we are driven by the relentless pursuit of tomorrow's big ideas.

SOCIAL
MOBILITY

TRANSLATIONAL
AND BASIC RESEARCH

.....
ABOUT
.....

"Global health is an immediate problem for everyone. There is no more natural isolation. Controlling and containing infectious diseases prevent their spread around the world." *President Samuel L. Stanley Jr., a nationally renowned expert in the field of emerging infectious diseases*

.....
Federal spending on research as a share of total government outlays has fallen from nearly 10 percent in 1968, during the space program, to 3 percent in 2015.

.....
Developed at Stony Brook by then faculty member and now Foundation Trustee Dr. Barry Collier, ReoPro® is a groundbreaking medication that inhibits life-threatening clots during cardiac intervention processes like angioplasty.

SUSTAINABILITY
AND CONSERVATION

SPURRING CURIOSITY

Laurie Krug, Assistant Professor of Molecular Genetics and Microbiology, became the first early career scientist to be named a Stony Brook University Discovery Prize Fellow. She studies herpes viruses associated with cancer "to understand how these viruses set up shop in specific cells, and what makes them wake up after years of dormancy in our bodies."

The Discovery Prize was established with a \$500,000 gift from the Stony Brook Foundation to support high-risk, high-reward research that furthers ideas and discoveries that lead to technological and medical innovations. In its first year, the Discovery Prize enticed 22 of Stony Brook's most promising young career faculty to submit proposals. A panel of six SUNY Distinguished Professors selected four finalists to compete for the prestigious prize. Each finalist had 10 minutes to explain their project before an audience and panel of judges composed of illustrious professors, laureates and philanthropists.

Krug was awarded \$200,000 to support her team's research. The judges also awarded the three remaining finalists \$50,000 each to support their impressive proposals.

ENGAGING THE BRIGHTEST MINDS IN MEDICINE

This year Stony Brook's Global Health Institute (GHI) reached a key milestone towards fulfilling its mission with Peter Small, MD, stepping into the role of Founding Director. Dr. Small comes to Stony Brook from the Gates Foundation, where he served as Deputy Director of the Tuberculosis Delivery Program.

GHI was made possible with a multimillion-dollar endowment created by Jim and Robin Herrnstein. Under Dr. Small's leadership, GHI will conduct groundbreaking health science research using a unique approach that spans from the molecular level to point of delivery, and encompasses fundamental work on ecology, developmental economics and disease, largely focused on Madagascar, but with the potential to become a model for other impoverished populations worldwide.

TRACKING EVOLUTION

News of an unexpected discovery made by a team of paleontologists led by Stony Brook professor Dr. David Krause ricocheted around the globe in 2014. Joe Sertich, a Stony Brook graduate student at the time, brought a huge slab of sandstone from Madagascar back to his lab. Hidden inside was the skull of a large

groundhog-like mammal that had lived among the dinosaurs nearly 70 million years ago. The team named the animal Vintana—Malagasy for "luck." Scientists learned that Vintana had an extraordinary sense of smell and weighed about 20 pounds, much more than most mammals from this period.

Before this discovery, very little was known about the early mammals of the Southern Hemisphere. This discovery paves the way for a deeper understanding of how animals evolve in a changing environment.

UNEARTHING OUR PAST

Our work to understand human evolution can unleash profound lessons for humanity's future. When Stony Brook archeologists, Drs. Sonia Harmand and Jason Lewis uncovered stone tools shaped 3.3 million years ago at the Turkana Basin Institute (TBI), they upended scientists' long-held assumptions that the first tools were made by *Homo habilis* 700,000 years later. "These oldest tools... can tell us a lot about cognitive development in our ancestors that we can't understand from fossils alone," said Dr. Harmand.

By June 2015, TBI and Stony Brook raised \$12 million to complete Phase III of TBI's research facility complex and are on track to meet or exceed their goal of \$15 million. These gifts will complete the final construction phase of TBI, the unparalleled destination for human origin research on earth.

PAYING IT FORWARD

This year Hong Zhang and Liya Liang donated \$300,000 to establish the "Liya Liang '94 and Hong Zhang '91 Endowed Faculty Fellowship in Materials Science." Materials science is instrumental in solving many innovation puzzles, from designing better batteries to developing more effective drugs. This fellowship will help support research at Stony Brook's College of Engineering and Applied Sciences. Zhang said, "We want to show our appreciation—to give back and to help students and the faculty."

.....
**OUR RESEARCH REPUTATION GROWS:
5.1 BILLION MEDIA IMPRESSIONS, INCLUDING**

"SAWFISH VIRGIN BIRTH IN THE WILD"
3,162,423,465

"DISCOVERY OF OLDEST TOOLS ON RECORD"
1,147,388,593

"DINOSAURS WERE LIKELY WARM BLOODED"
595,282,541

Turkana Basin Institute Site where man's earliest stone tools were discovered.

MPK-WTAP-TBI

“These oldest tools... can tell us a lot about cognitive development in our ancestors that we can't understand from fossils alone.”

Dr. Sonia Harmand, research associate professor in early paleolithic archeology & human evolution

FUNDRAISING REPORT FY 2014-2015

\$10 MILLION +

**PRESIDENTIAL
INITIATIVES**
\$13,504,939

**UNIVERSITY
HOSPITAL**
\$16,860,557

\$4 MILLION +

**PROVOSTIAL
INITIATIVES**
\$8,025,140

MEDICINE
\$7,582,148

**ARTS AND
SCIENCES**
\$5,445,097

ATHLETICS
\$4,732,698

**GRADUATE SCHOOL/
SCHOOL OF
PROFESSIONAL
DEVELOPMENT**
\$4,468,188

\$1 MILLION +

**MARINE AND
ATMOSPHERIC
SCIENCES**
\$2,031,614

STALLER CENTER
\$1,654,937

DENTAL MEDICINE
\$1,648,838

BUSINESS
\$1,394,141

JOURNALISM
\$1,102,268

< \$1 MILLION

**ENGINEERING
AND APPLIED
SCIENCE**
\$986,904

PARENT FUND
\$552,914

**LONG ISLAND
VETS HOME**
\$541,941

< \$500 THOUSAND

**HEALTH TECHNOLOGY
& MANAGEMENT**
\$299,046

**STONY BROOK
SOUTHAMPTON**
\$117,999

NURSING
\$76,658

SOCIAL WELFARE
\$47,413

LIBRARY
\$15,062

**HEALTH SCIENCES
CENTER**
\$1,120



SUSTAINABILITY AND CONSERVATION

“It’s a never-ending job to convince people that maintaining biodiversity is the right thing to do; it’s not just pretty landscapes – we depend on these natural systems, the species in them, and the multitude of services they provide for our very survival.”

WE ARE THE STEWARDS WHO SERVE OUR WORLD. At Stony Brook University we are extending the boundaries of what today's public research universities can accomplish, and philanthropy has been a critical component of our success. Giants in their respective fields, Stony Brook researchers are galvanizing governments, businesses and communities to protect the most biologically diverse, ecologically important corners of the world.

In Madagascar, Professor Patricia Wright, one of the world's foremost experts on lemurs, continues to collaborate with the Malagasy government to protect the lemurs' habitat from deforestation and loggers. Across the Indian Ocean in Kenya is the celebrated anthropologist, Richard Leakey. While unearthing some of the most important finds on human origins, he has earned a global reputation for his effort to save Kenya's elephants from the illegal ivory trade. His accomplishments and legendary activism have inspired generations of paleontologists.

Conservationist Russ Mittermeier, named a "Hero for the Planet" by Time magazine, has conducted fieldwork in more than 30 countries and has seven species named in his honor. MacArthur Foundation Genius Grant award recipient Carl Safina authors elegiac books exploring the scientific, moral and social dimensions of humankind's relationship with the natural world, including the recently released *Beyond Words: What Animals Think and Feel*.

SOCIAL
MOBILITY

TRANSLATIONAL
AND BASIC RESEARCH

.....
ABOUT
.....

69 percent of Madagascar's inhabitants live below the poverty threshold.

More than 90 percent of Madagascar's wildlife is found nowhere else on earth.

Since 1991, Stony Brook's Centre ValBio and Dr. Patricia Wright's team have saved 110,000 acres of rainforest that now protects 15 species of lemurs, 10 species of frogs, 15 species of chameleons and 118 species of birds.

More than 20,000 African elephants are killed for their ivory tusks every year.

"Every time a species becomes extinct, or is no longer able to live in the wild, we lose something in our capacity to understand ourselves and our relationship to the world," said Stony Brook Professor and renowned anthropologist, Richard Leakey. Today Dr. Leakey is helping lead another crusade against the recent surge in elephant poaching in Africa.

**SUSTAINABILITY
AND CONSERVATION**

Centre ValBio
Madagascar



INSPIRING STEWARDSHIP

Dorothy Lichtenstein, President of the Roy Lichtenstein Foundation and a Stony Brook Foundation Trustee, is well known for her generous contributions, particularly to the arts at our university. This year her giving included a significant contribution to Centre ValBio, the research center founded in Madagascar by Stony Brook professor Dr. Patricia Wright, which exemplifies the enormous influence that hands-on science can have on sustaining our natural environment.

Following a visit to ValBio, Lichtenstein gave \$500,000 to support Dr. Wright's work helping the country's indigenous people protect their unique ecosystems.

FINDING REAL-WORLD SOLUTIONS

In FY2015, a \$750,000 gift established the Marinetics Endowed Professorship in Marine Sciences in the School of Marine and Atmospheric Sciences (SoMAS). Professor Bassem Allam has been selected for this professorship. His research focuses on studying the environmental factors associated with infections in local shellfish and the mechanisms of resistance to pathogens and disease.

SoMAS Associate Professor Demian Chapman received \$4 million from Vulcan, Inc. to fund the FinPrint initiative, the first ever global survey to help advance research in shark conservation.



“Despite the long-held fascination with sharks, only recently have we begun to realize how important they are for keeping the oceans healthy. Conservation efforts are needed now more than ever.”

Demian Chapman, an associate professor at SoMAS, is leading a research expedition funded by the Moore Bahamas Foundation in the Bahamas-based Shark Sanctuary.

ADVANCING OUR COMMUNITY

"We are making this investment to help ensure that Long Island remains the best place to live, learn, work and raise a family now and for many years to come."

*Bret Sears
President and CEO
Island Federal Credit Union*

BANKING ON STONY BROOK



In October 2014, Stony Brook University and Island Federal Credit Union (Island) proudly announced a 10-year, \$7 million corporate advertising sponsorship and philanthropic partnership that will have a tremendous impact across multiple areas of the University community, including:

ISLAND FEDERAL CREDIT UNION ARENA is Stony Brook's newly renovated 4,000-seat arena that allows us to showcase our men's and women's basketball talents, engage our spirit and build connections with our local community.

COLLEGE OF BUSINESS will profit from Island's investment in a database that will support faculty research, the new Island Symposium on Banking, and ongoing support for undergraduate scholarships, research and program funding.

STONY BROOK CHILDREN'S HOSPITAL is growing to bring more of the best ideas in medicine to kids. Thanks to donors like Island, we expect to meet the new Hospital's \$25 million fundraising goal.

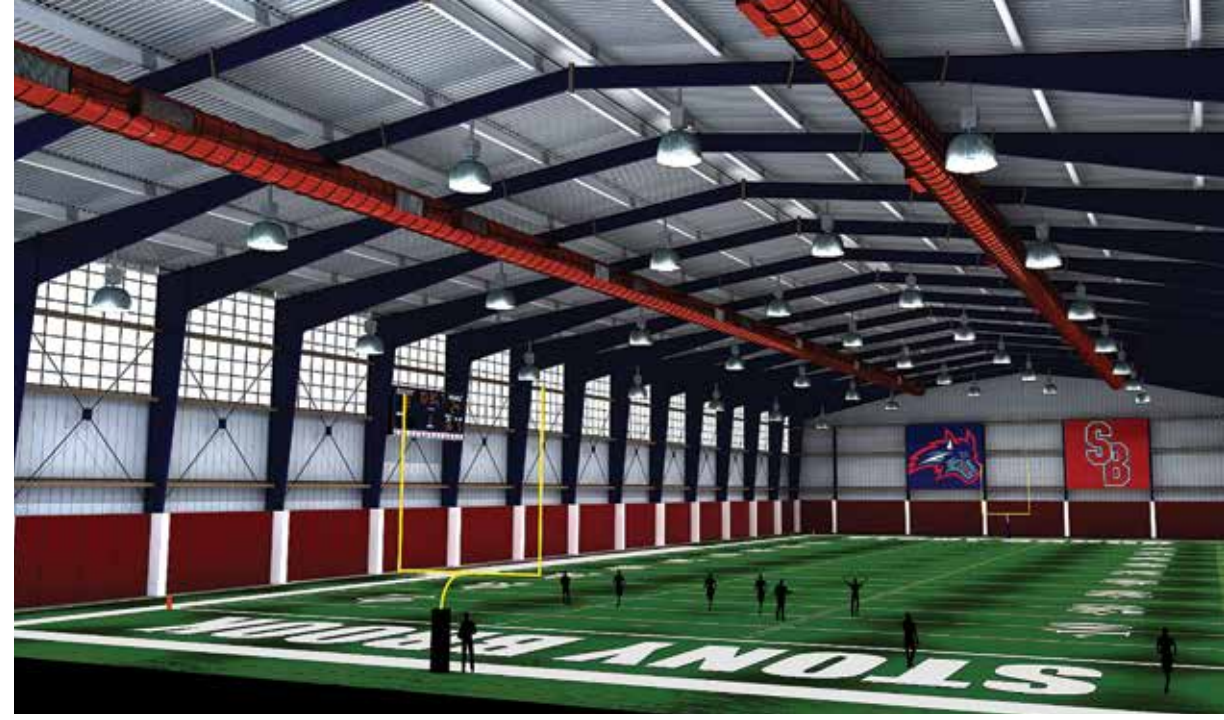
LONG ISLAND STATE VETERAN'S HOME is a welcoming place our honored veterans are proud to call home and where Island will support programs and equipment to enhance its residents' quality of life.

ALUMNI RELATIONS serves the University's 150,000 plus alumni, and Island's generous donation will help the team continue to produce traditions such as Wolfstock and many other enriching alumni programs.

THE STALLER CENTER FILM FESTIVAL celebrated its 20-year anniversary this year along with a generous donation from Island that will allow it to continue offering the best new independent full-length and short films for its faithful following.

CAMPUS BANKING Island is now providing convenient, on-campus banking services and new financial products designed specifically for the Stony Brook community and alumni.

"Our agreement with Island Federal Credit Union is a partnership in the truest sense of the word," said President Samuel L. Stanley Jr. "Island is not just supporting the campus; it is making a long term commitment to the economic vitality of Long Island."



SEAWOLVES NEVER STOP

Thanks to a \$5 million matching challenge grant from Glenn and Eva Dubin, all gifts for a new indoor training center will be matched dollar for dollar. The new state-of-the-art training center will enable the University to compete with peer schools in our conference for the high caliber student athletes and coaches.

During his years at Stony Brook, Glenn Dubin '78, '12 was a member of the football and lacrosse programs. His B.A. in Economics served him well: he went on to become the co-founder and CEO of Highbridge Capital Management, a global alternative asset management company. Longtime friends of Stony Brook Athletics, the Dubins donated \$4.3 million for the Dubin Family Athletic Performance Center in 2011 and \$1 million in 2005 to create the Glenn Dubin Endowed Scholarship Fund, which offers scholarships to students from Washington Heights, particularly to students from P.S. 132, where he attended elementary school.

GIFTS TO FUND THE NEW INDOOR TRAINING CENTER WILL BE MATCHED DOLLAR FOR DOLLAR BETWEEN NOW AND JUNE 30, 2016.

FOR MORE INFORMATION AND TO GIVE, VISIT: www.stonybrook.edu/dubinchallenge



THE BEST CARE IN MEDICINE. FOR KIDS.

The smallest babies, the sickest children and the most complex pediatric traumas from across our region all come to Stony Brook Children's Hospital, the only dedicated children's hospital located in the 100 miles between the Nassau/Queens border and Montauk, and the only children's hospital on Long Island associated with a medical research institution.

MAKING A DIFFERENCE Having recruited some of the country's top pediatric doctors, nurses and social workers, Stony Brook Children's Hospital provides specialized clinical care, technology, pharmacy, medical equipment and a family-centric environment for new-borns through adolescents and young adults.

RANKED AMONG THE BEST Just five years old, Stony Brook Children's Hospital is already winning accolades: we were ranked among the top 50 providers for pediatric nephrology in *U.S. News & World Report*. We are the only Suffolk County hospital to perform renal transplants for children. Plus, we are one of only six pediatric Multiple Sclerosis Centers of Excellence in the United States.

Scheduled to open in 2017, the expanded Stony Brook Children's Hospital will be located in a new 10-level Hospital Pavilion adjacent to Stony Brook University Hospital. The new building will feature a pediatric intensive care unit, adolescent unit, procedure suite, hematology/oncology unit, medical/surgical units, modern patient and family amenities and even more of the best in medicine specifically for children.



"An essential mission of Stony Brook Children's is to train the next generation of doctors and to push back the frontiers of translational medical research."

*Kenneth Kaushansky, MD
Stony Brook University
School of Medicine Dean
and Senior Vice President
of Health Sciences.*

THANKS TO ALL WHO HELPED US COMPLETE A \$9 MILLION CHALLENGE FOR THE NEW CHILDREN'S HOSPITAL BUILDING.

A SPECIAL THANK YOU TO:

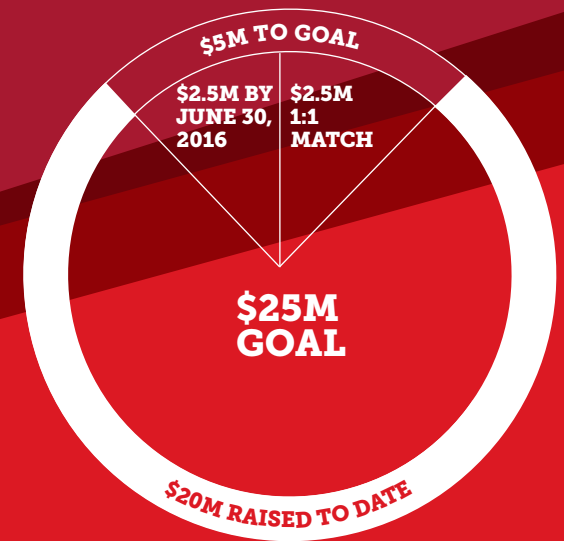
- Anonymous
- The Bank of America Foundation
- Nancy S. Boland & Luke D. Boland
- Debra A. Breslawski & James Breslawski
- Angela Biggar & Robert Biggar
- Day One Foundation
- The DeMartis Family
- Estate of Philip J. McGrath
- Barbara Ferentinos & Peter Ferentinos
- Forest Laboratories, Inc.
- Richard L. Gelfond '76 & Peggy Bonapace Gelfond
- The Goodale Family
- Guru Krupa Foundation, Inc.
- Holiday Inn Express – Stony Brook
- The Tsunis Family
- Island Outreach Foundation, Inc.
- Margaret M. McGovern, MD, PhD '78 & John P. McGovern '78
- Knapp Swezey Foundation
- MARK S. EGHARRI & ASSOCIATES PLLC
- Richard T. Nasti, Esq. '78 & Maura Nasti
- Dawn A. Okst '91 & David Okst
- Nina Parker & Christopher M. Parker
- The Pelletier & DeCristofaro Family
- Redwood Abstract, Inc.
- The Braun Family
- James H. Simons, PhD & Marilyn H. Simons, PhD '74, '84
- Samuel L. Stanley Jr., MD & Ellen Li, MD, PhD
- Stony Brook University Hospital Auxiliary
- Stony Brook Foundation
- The Sunrise Fund "Little Miracles Fashion Show"
- Eva Swoboda, MD '01 & Lester L. Ward
- TRITEC Real Estate
- The Coughlan Family

THANK YOU TO OUR STATE LEGISLATORS WHO PROVIDED STATE FUNDING FOR THIS PROJECT:

- New York State Senate Majority Leader John Flanagan (R-East Northport)
- New York State Senator Kenneth P. LaValle (R-Port Jefferson)

NEW! THE KNAPP SWEZEY CHILDREN'S CHALLENGE

All private and public donations to the new hospital building by June 30, 2016 will be matched dollar for dollar – up to \$2.5 million – thanks to the Knapp Swezey Foundation.



**IF WE MEET THE MATCH, WE REACH OUR GOAL!
THANKS TO YOU AND THE KNAPP SWEZEY
FOUNDATION!**

DOUBLE YOUR IMPACT ON CHILDREN'S HEALTHCARE

www.stonybrook.edu/childrenschallenge

FOSTERING MOMENTUM

"Your sustained support for Stony Brook helps us be bold. It helps us face our future with determination and confidence and ultimately meet our noble mission as the preeminent public research university in New York State."



Dexter A. Bailey Jr.
Executive Director
Stony Brook Foundation

Thanks to you and many other donors, Stony Brook University is positioned well to launch a comprehensive fundraising campaign this fall.

Stony Brook's reputation as one of the country's top public research universities continues to grow and inspire more support from friends, alumni, corporations and foundations. Since July 2011 the Foundation has raised more than \$400 million of the campaign's \$600 million target goal.

The Campaign for Stony Brook aims high and thinks long-term.

Our vision for the future reaches beyond the horizon. It's about fostering the right kind of momentum to make a real difference in the collegiate lives of our dedicated faculty and focused students. Because at Stony Brook, we expect our students and faculty to go farther than they ever knew they could.

The Campaign's ultimate success will also be measured by the growth of our endowment. Currently, our \$175.02 million is well below the average endowment of \$2.4 billion among our peer institutions.

A healthier endowment will allow Stony Brook to offer more scholarships and university-based financial aid to our deserving students. It will fund endowed faculty positions, critical in a hyper-competitive environment, to attract and retain leading scientists, doctors and scholars in departments across campus. And finally, a stronger endowment allows the University to invest more in scholarly research in an era of reduced federal spending, especially for basic research.

Your sustained support for Stony Brook helps us be bold. It helps us face our future with determination and confidence and ultimately meet our noble mission as the preeminent public research university in New York State.

Thank you for all you continue to do for Stony Brook.

**MARKET VALUE AAU PUBLIC
ENDOWMENT AVERAGE:**

**\$2.4
BILLION**

SBU ENDOWMENT:

**\$175.02
MILLION**

**AAU PUBLIC
ALUMNI AVERAGE
PARTICIPATION
RATE**

13.2%

**SBU
ALUMNI AVERAGE
PARTICIPATION
RATE**

10%

FUNDRAISING PERFORMANCE FY 2011-2015

FUNDRAISING RESULTS
PAST 5 YEARS. TOTAL: \$428,222,036

FY 2011
\$28,062,890

FY 2012
\$181,308,313

FY 2013
\$82,009,744

FY 2014
\$65,751,467

FY 2015
\$71,089,622

46

GAVE
\$1 MILLION +

37

NEW ENDOWED
FACULTY POSITIONS

29,328
DONORS

EMPOWERING OUR MISSION

Established in 1965, the Stony Brook Foundation is a private, independent 501(c)(3) nonprofit organization. Its mission is to advance the goals and strategic plan of Stony Brook University by raising and managing private funds on the University's behalf. Since its inception, the Foundation has raised nearly \$800 million in gifts and employs best practices to ensure all gifts are wisely invested and distributed in a manner consistent with each donor's expressed intent.

STONY BROOK FOUNDATION OFFICERS

CHAIR

Richard L. Gelfond '76
CEO
IMAX Corporation

VICE CHAIR

David E. Acker '81
Founder
Prorhythm

CHAIR EMERITUS

James H. Simons, PhD
Chairman
Euclidean Capital LLC
Honorary Doctorate
of Humane Letters
SBU 1992

SECRETARY

Cary F. Staller, Esq.
President
Staller Associates

TREASURER

Dr. Nancy Rauch
Douzinas
President
Rauch Foundation

EX-OFFICIO VOTING TRUSTEE

Samuel L. Stanley Jr., MD
President
Stony Brook University

EXECUTIVE DIRECTOR

Dexter A. Bailey Jr.
Senior Vice President
for Advancement
Stony Brook University

TRUSTEES

Ashvin B. Chhabra, PhD
President
Euclidean Capital LLC

Barry S. Collier, MD
David Rockefeller
Professor of Medicine,
Physician in Chief,
Vice President for
Medical Affairs
The Rockefeller
University

Guy-Max Delphin '97
CEO and CIO
Delphin Investments LLC

Barry M. Fox, Esq.
Founding Partner
ServCo LLC

Stuart D. Goldstein '74
Founder & Chairman
SDG Management
Corporation

Karen Keogh '88
Managing Director for
State and Local
Government Affairs
JP Morgan Chase

William L. Knapp '78
Knapp Swezey Foundation

Laurie Landeau,
VMD, MBA
President
Laurie Landeau Foundation
and Ralph Landau
Foundation
Associate Director
Aquavet

Henry B. Laufer, PhD
Chief Scientist (Ret.)
Renaissance Technologies

Dorothy Lichtenstein
President,
Roy Lichtenstein
Foundation
Honorary Doctorate
of Humane Letters,
SBU 2014

Nirmal Mattoo, MD
Co-President and
Co-Founder
Atlantic Dialysis
Management Services

Richard T. Nasti, Esq. '78
Senior Vice President and
Chief Financial Officer
H.J. Kalikow & Co.

S. Louise Phanstiel, CPA
Independent Director
Verastem, Inc. and
Myriad Genetics, Inc.

Leonard A. Spivak, Esq. '64
Partner (Ret.)
Cahill, Gordon & Reindel

Susan M. Steinhardt, Esq.
Co-Founder and
President
Homework-Helpers, Inc.

FOUNDATION STAFF

Erin Abouzaid, PhD
Chief Investment Officer

Lyle Gomes
Chief Financial Officer
and Vice President
for Finance
Stony Brook University

Jason Hsueh
Chief Operating Officer

Evelyn Berezin
Founder (Ret.)
Redactron Corporation

Stuart B. Cherney, MD
Orthopedic Surgeon

Leo Guthart, PhD
Chairman & CEO
Topspin Partners

Walter B. Kissinger
WBK Associates

EMERITUS TRUSTEES

Erwin P. Staller
Chief Executive Officer
Staller Associates, Inc.
Honorary Doctorate
of Humane Letters
SBU 2001

Jerome L. Swartz, PhD
Founder and Chief
Scientist Emeritus (Ret.)
Symbol Technologies
President, The Swartz
Foundation

Charles B. Wang
Founder and Chairman
Smile Train

FISCAL YEAR 2014-2015 DONORS

In the pages that follow, we recognize our generous contributors for their giving during the 2014-2015 fiscal year (July 1, 2014 to June 30, 2015).

\$500,000 AND ABOVE

Alan Alda and Arlene Alda
Anonymous
Lalit Rai Bahl, Ph.D. and Kavita Kinra
Michael R. Corey and Emilie Roy Corey
The Corey Foundation
Dialysis Clinic, Inc.
Miriam G. Donoho, Ph.D. and David Donoho, Ph.D.
Dr. Robeson M. Herrnstein and Dr. James R. Herrnstein
The Jim and Robin Herrnstein Foundation, Inc.
Island Federal Credit Union
Howard I. Klein '69
Knapp Swezey Foundation
Priscilla S. Knapp
Henry B. Laufer, Ph.D. and Marsha Zlatin Laufer, Ph.D.
Dorothy Lichtenstein
Lisa J. Lourie
Dr. Robert W. Lourie
The Lourie Foundation, Inc.
The Lundin Foundation
Nirmal K. Mattoo, M.D. and Augustina Mattoo
MJS Foundation Inc.
Jennifer Oppenheimer and Jonathan Oppenheimer
Jonathan & Jennifer Oppenheimer Foundation
The Robert David Lion Gardiner Foundation Inc.
Simons Foundation
James H. Simons, Ph.D. and Marilyn H. Simons, Ph.D.
'74, '84
Frank M. Struhar
Ian Telfer and Nancy Burke
Thaw Charitable Trust
Eugene V. Thaw

\$250,000 - \$499,999

Anonymous
Cherith Foundation, Inc.
Scott Chen and Yilin Wang '07
Eleni Ciacco, M.D. and Guy F. Ciacco
Ambassador Charles A. Gargano
Richard L. Gelfond '76 and Peggy Bonapace Gelfond
Island Outreach Foundation Inc.
David S. Knapp and Michele Knapp
Laurie Landeau Foundation LLC
Marcia Montoya and Mario Montoya
PSEG Foundation
The Estate of Walter S. Radgowski
Roe Foundation
Gregory Manocherian
The Shaw Foundation Hong Kong Ltd
The Staller Family
Lori A. Zaikowski '86, '91, '96
Hong Zhang, Ph.D. '91 and Liya Liang, Ph.D. '94

\$100,000 - \$249,999

All The Way Foundation
Dennis and Karen Mehiel
Anonymous
Astoria Federal Savings
JoAnn E. Becht
Anthony M. Bongiorno '81 and Theresa Fogliano
Campolo, Middleton & McCormick, LLP
Joseph N. Campolo, Esq. '94, Scott D. Middleton, Esq. '84
Myrna S. Chao '77, '80
Eugene Cheng '97 and Chin Huei Cheng '96, '97
Drs. Bobbi and Barry Collier
Drs. Martin & Dorothy Spatz Foundation
Glenn Dubin '78 and Eva Dubin
Peter Ferentinos and Barbara Ferentinos
PAFCO Investments LLC
Fondazione Internazionale
Robert J. Frey, Ph.D. '80, '87 and Kathryn B. Frey
Frey Family Foundation
Aaron W. Godfrey and Valerie M. Godfrey '77
Robert B. Grubbs, Ph.D. and Katherine B. Aubrecht, Ph.D.
Krishnareddy R.S. Gujavarty, M.D. and Prabhavati Gujavarty
Hanna Family
Estate of James M. Taylor
The Jewish Foundation for Education of Women Fund
Walter B. Kissinger
The Kissinger Family Foundation
Louis Morin Charitable Trust
Milmar Food Group, LLC
Martin H. Hoffman
The New York Community Trust
NoVo Foundation
The Perelman Family Foundation, Inc.
Pollock-Krasner Foundation
Charles C. Bergman
Deepak Raj and Neera Raj
Rauch Foundation
Nancy Rauch Douzinas, Ph.D.
James Rosinsky and Jacqueline Rosinsky
Samuel L. Stanley Jr., M.D. and Ellen Li, M.D., Ph.D.
Estate of Walter P. Pettipas
Huayi Zhang, Ph.D. and Siuling Zhang

\$50,000 - \$99,999

Lisa Aiello
Anonymous
Autodesk Inc.
Barbara Anderson 2011 Family Trust
The Bernard Osher Foundation
Bethpage Federal Credit Union
Morton S. Bouchard III
James Breslawski and Debra A. Breslawski
Frances Brisbane, Ph.D.
Charities Aid Foundation
Cold Spring Harbor Laboratory
Day One Foundation
Delphin Investments

Guy-Max Delphin '97

Dr. Stephen A. Della Pietra and
Dr. Pamela Hurst-Della Pietra

*Dr. Stephen Della Pietra and Dr. Pamela Hurst-Della
Pietra Family Foundation*

Vincent J. Della Pietra, Ph.D. and Barbara J. Amonson
Robert de Zafra, Ph.D. and Julia M. de Zafra, Ph.D.
Yusuf Hannun, M.D. and Lina Obeid, M.D.
H.J. Kalikow & Company LLC

Peter S. Kalikow, Richard T. Nasti, Esq. '78

Hearst Foundation
Indianapolis Zoological Society, Inc.
Thomas Iovino and Judy Iovino
Peter S. Kalikow and Mary Kalikow

Katherine J. King Kellerman '94 and Andrew Kellerman
Lackmann Culinary Services

Andrew W. Lackmann

Don Lippencott

Marcy A. McGinnis
Richard T. Nasti, Esq. '78 and Maura Nasti

Dr. Iwao Ojima and Yoko Ojima
Laura Olle '72 and Peter J. Olle

Paul W. Zuccaire Foundation
Alice Jean Zuccaire

Maria Emanuel Ryan, D.D.S., Ph.D. '89, '98 and Charles S.
Ryan, Ph.D. '90

Frank Sciarne
Mark J. Snyder '69 and Gloria B. Snyder '72

Amal M. Sokkar
Nancy K. Squires, Ph.D.

TRITEC Real Estate

The Coughlan Family

George J. Tsunis, Esq. and Olga Tsunis

The Ward Melville Heritage Organization
Gloria D. Rocchio

The William Marx Foundation
Cynthia Marks

\$10,000 - \$49,999

Dr. David Ellis Acker '81
Leonard I. Ackerman and Judith A. Ackerman
Active Retirement Community, Inc. Jefferson's Ferry
Adobe Systems Inc.
Mary S. Consalvi Alario, J.D. and Anthony F. Alario, DVM
The Alec Baldwin Foundation, Inc.

Alec Baldwin

Marilyn M. Alfeld
Alfred and Jane Ross Foundation, Inc.

Jane Flatau Ross and Alfred Ross

ALG Family Foundation
Christopher Mark Algieri '07

Chris Algieri Boxing Inc.

Steven J. Allard '76 and Mary Ann M. Allard
The ALS Association

Angela H. Alvarez
American Association for the Advancement of Science
American Association of Colleges of Nursing

American Chemical Society
American Legion Roosevelt Post NO 1051

American Student Dental
Jacqueline Ann Ammirata, M.D. '89, '93 and Domenico
Pizzuto, Ph.D. '85, '91

Andrew Sabin Family Foundation
Andrew E. Sabin

Anonymous
Marie Ardolino '98 and Michael A. Ardolino

Automatic Data Processing, Inc.
Morrell Michael Avram, M.D. and Maria Avram

Desarazu Krishna Babu, Ph.D. '72 and
Desarazu Sitha Babu, Ph.D. '75, '80

Bank of America
Julie Barer

Ellen J. Bell '81 and William Bell
Bell Family Foundation

Nathaniel L. Bohrer '80 and Betsy Bohrer
Frank Bonavita and Maureen Bonavita
Broadridge Securities Processing Solutions, Inc.
Bronx-Lebanon Hospital Center

Dayton T. Brown, Jr. and Karin E. Brown
Dr. Deborah A. Brown
Arlene M. Butterklee '82, '84 and Neil H. Butterklee '80, '82
Michael Anthony Caballero
Canon USA Inc.
Frank Castagna and Rita Castagna
Joseph John Catapano '09
Cavium
Sean Chamberlain '07

My Lacrosse Tournaments, Inc.

Fusen E. Chen, Ph.D. '87 and Yijen Chen
Chenwu Foundation

Stuart B. Cherney, M.D. and Madeline Cherney '01
Richard A. Clark, M.D. and Marcia G. Tonnesen-Clark, M.D.
Consolidated Edison Company of New York, Inc.
Corporate Funrun Inc.

The Cowles Charitable Trust
Jenny Cox-Steiner

Cure Multiple Sclerosis Foundation of NY
Filomena Lombardi

Bijal A. Das '90 and Kaushik Das, M.D. '89
The David Geffen Foundation

Davidow, Davidow, Siegel and Stern
Lawrence E. Davidow

Gary Alan DeWaal, Esq. '76
Mary R. DeWan

James J. DiPietro '76 and Francene Di Pietro
Brian Michael Ditchek '73 and Judith S. Ditchek '74
Loriann Dobbins-Mulvey

Jody Donohue
E. W. Howell Co. Inc.

e4sciences, LLC
East Farm LLC

Dr. David Ellis Acker '81

East Hampton Beach Preservation Society, Inc.
EisnerAmper LLP

EMC Corporation
Empire Vision Centers

Alan S. Epstein '71 and Debby Epstein
Event Associates, Inc.

Ellin A. Delsener

The Everard Read Gallery PTY LTD
Mark Read and Christine Read

Facebook

FACT Find a Cure Today Breast Cancer Foundation
Felix Flateau - Alexander Rosenbaum Fund, Inc.

Dr. Suzanne D. Fields and Dr. Jeffrey N. Sunshine

Ford Motor Company
Forest Laboratories, Inc.
Charles S. Ryan, Ph.D. '90

Foundation for Gynecologic Oncology
Full Throttle Magazine LINY Inc.
FutureWei Technologies, Inc.
Edwina Von Gal
Robert L. Gallucci, Ph.D. '67 and Jennifer E. Sims
The Gardener Foundation, Inc.

John Garfinkel
Christopher A. Garofalo '96 and Carrie L. Garofalo

Judith Gibbons and Francesco Scattone
Mae F. Go

Colin Goddard, Ph.D. and Amanda Goddard, Ph.D.
Goddard Family Charitable Foundation

Stuart D. Goldstein '74 and Jolie Goldstein
Carol A. Gomes '90, '92, '97 and Lyle P. Gomes

The Goodale Family
Louis C. Grassi

Louise Guameri '76 and Dr. Stephen Gelfman
Anne Gilchrist Hall and John Hall

Halpern Family Foundation, Inc.
Ellen Hanson and Richard Perlman

The Perlman Family Foundation
Adrienne E. Harris, Ph.D.

William F. Hempfling
John L. Hennessy, Ph.D. '75, '77 and Andrea J. Hennessy
Henry Schein Inc.

Leith B. Hill and Dr. John Hill
Hilton Garden Inn Stony Brook

Holiday Inn Express Stony Brook
John C. Tsunis, Esq.

Home Box Office, Inc./Time Warner Inc.
Eric L. Kessler '77, Robert S. Roth '77

Dr. Tadashi Honda

Honeywell Building Solutions
Shelley I. Hoon '79 and John W. Keith

Michael S. Hurt and Sally A. Hurt
IBM

Imetric Swiss 3D Scanning Systems
The Independent Insurance Agents & Brokers

of Suffolk County
The Irene Ritter Foundation

The Jacquelyn and Gregory Zehner Foundation
Robert Jamieson

The John D. & Catherine T. MacArthur Foundation

Jonas Center for Nursing Excellence
 Evan C. Jones, M.D. '00 and Rosa F. Pereira
 J-Track, LLC
 Ariel Jurmann, M.D. '98 and Dalia S. Lisker
 The Kavli Foundation
 Karen Keogh '88 and Michael P. Keogh
 Kerry Rose Foundation, Inc.
 Dimitrios Kilimitzoglou, D.D.S. '02, '03
 Edward M. Knapp '82 and Patty Knapp
 Alan R. Koch '71 and Carol A. Koch
 Dr. David W. Krause and Susan M. Krause
 Tomislav Kundic and Vesna Kundic '05
 Laurence W. Levine Foundation, Inc.
 Andrew S. Lee, M.D. '80 and Christine Lee
 Leslie P. & Muriel Oberleder Irrevocable Trust
 Michael S. Levine, Esq. and Pamela A. Weber, M.D.
 LG Management LLC
Dr. Leo A. Guthart
 Libor Suffolk North Shore Chapter
 Leah A. Lipsich, Ph.D. '79 and H. Matthew Wells
 LITECH Associates, LP
 Filomena Lombardi and Scott Borland
 The Louis and Rachel Rudin Foundation, Inc.
 The Louis Berkowitz Family Foundation, Inc.
 MacAllister Machinery Company, Inc.
P. E. MacAllister
 Francis Maglio and Theresa Maglio
 Dr. Gerard R. Manecke, Jr., M.D. '80, '84
 and Dr. Lisa J. Kutner
 MARK S. EHRARI AND ASSOCIATES PLLC
Mark S. Eghrari
 Naveed N. Masani, M.D. '99
 Max Kade Foundation
 Dr. Margaret M. McGovern '78 and
 John P. McGovern '78
 Medtronic, Inc.
 Guy M. Miller '93 and Elizabeth Miller
 Cynthia Gay Mitchell '11 and Joseph H. Mitchell
 Sudesh Mukhi and Dr. Sudha Mukhi
 Susan J. Mullhaupt '93, '95 and Dr. Andrew Mullhaupt
 Naples Premier Concierge, P.L.
 National Association of Drug Court Professionals
 Neurology Associates of Stony Brook UFPC
 New York Community Bank Foundation
 Mark W. Newhouse and Lorry Newhouse
 Nobel Biocare USA
 Northwestern Mutual

Steven F. Abbass
 Jane Overman
 Dr. Michael L. Pearl and Dr. Dayna L. McCauley
 Stephen Perl binder and Sandy Perl binder
 Stephen C. Pikiell and Kathryn C. Pikiell
Steve Pikiell Basketball Camps, LLC
 Pitney Bowes Corporation
 Gertrude Postl
 Priscilla Bowden Potter
 Dr. Cedric J. Priebe Jr.
 Proskauer Rose, LLP
Mary S. Consalvi Alario, J.D.
 Manlong Rao
 Nancy E. Raposa
 Redwood Abstract Inc.
The Braun Family
 Richard Reis '67 and Maryruth Reis
 Renaissance Technologies LLC
 Rett Syndrome Research Foundation
 Meryl Weiss Robinson and Christopher Robinson, Ph.D.
 Rockefeller Philanthropy Advisors
 Janice Lee Rohlf '80, '89 and F. James Rohlf, Ph.D.
 Stephan R. Roker '88 and Rhona Roker
 Robert S. Roth '77 and Linda Zimmerman Roth
 Clinton T. Rubin, Ph.D. and Jennifer Sigler, R.A.
 Sachem Dental Group
 Vladimir Sadov and Elena Sadov
 David E. Sanchez, M.D. '92 and
 Tracy M. King-Sanchez '92, '94, '12
 Robert D. Scarth '91 and Linda M. Scarth '92
 Peter A. Seccia '89 and Lisa Seccia
 Gregg G. Seibert '78 and Monique Seibert
 Stuart L. Sharoff '81 and Roxane Sharoff
 Paul L. Siegel '97
 Andrew A. Silver, Ph.D. '75 and Merrill I. Leventer Silver '75
 Lee Silverman
 Dr. Sanford R. Simon
 Dr. Robert Singer and Beth Singer
Singer Foundation
 Sirai Management Limited Parkhouse
 Merry Slone and Richard A. Stone
 Annaliese Soros
 Leonard A. Spivak, Esq. '64 and Nicole Spivak
 Dr. Shikaripur N. Sridhar and Dr. Kamal K. Sridhar
 Kim Staller and Joseph A. Macari
 Dr. Martin Staller
 Robert Stark

Susan B. Steinhardt, Esq. and John R. Steinhardt
 Stony Brook Alumni Association
 Stony Brook Univesity Hospital Auxiliary
 Suffolk Chapter, Knights of Columbus Charities, Inc.
 Suffolk Transportation Service, Inc.
John J. Corrado
 Sumitomo Rubber Industries, Ltd
 Laurence I. Sussman
 Rita Taca
 Target Corporation
 TC Electric, LLC
 Teachers Federal Credit Union
 Team Ardolino/Realty Connect USA
Michael A. Ardolino
 Theresa Fan Club LLC
 Tinker Foundation
 The Tsunis Family
 University Associates in Obstetrics and Gynecology
 UFPC
 Robert C. Victor '61
 Dr. Jade P. Vinson
 W. L. Gore & Associates
 Jonathan M. Wainwright and Candace Wainright
 Michael V. Wall '76, '78 and Ann C. Wall
 Rosalind A. Walrath
 Dr. Sheldon Weinig and Mary Jo Weinig
The Weinig Foundation
 Welkin Mechanical, LLC
 Peter L. Wexler '77 and Deborah K. Wexler

\$5,000 - \$9,999

29 Research Way Associates, L.P.
 Miriam Ainbinder
 Robert A. Alessi, Esq. '79 and Emma R. Alessi
 Amgen USA
 An Evening With Theresa Inc.
 Anonymous
 Kenneth P. Aron, Ph.D. '79 and Felicia Aron
 ASIS International Long Island
 BAE Systems
 Allan M. Bahn
 Simon Y. Bangiyev, D.D.S. '07
 Dr. Stanko Barle and Nicole Barle
 Daniel M. Barlev, M.D. '90, '12, '14 and Sharon Barlev

Joanne Bentivegna
 Evelyn Berezin
 Rachel Ann Bergeson, M.D. and Brian Margolis, M.D.
 Stanley Bergman and Dr. Marion Bergman
Stanley & Marion Bergman Family Charitable Fund
 Allison Berman '75
 Laura R. Blasberg
 Boilermatic Welding, Inc.
Shasho Pole
 Boston Scientific Corp.
 Ann Boyd-Stewart and William E. Stewart
 Brighton Eye Associates
 Diane D. Brink '80
 Brookhaven Science Associates, LLC
 Michael Brooks
 Anthony J. Casino, D.D.S. '78 and Anita Casino
 Robert B. Catell and Joan Catell
 Joseph Ceccoli and Stephanie Ceccoli
 Dr. Latha Chandran '14 and Prem G. Chandran
 Charmer Industries Inc.
 Chatham Imports Inc.
 Eddie Cobbinah '04
 Col Properties
 Colgate Speakers Bureau
 Joseph Colletta
 Combined Jewish Philanthropies
 Covidien
 The Gardner Cowles III Charitable Foundation
Pat and Betty Cowles
 Elaine M. Crosson
 Crystal Brook Music International
Yoko Ojima
 Custom & Classic Car Show
 Ana R. Daniel '14
 Devon Daniel
 Dr. Brigitte A. Demes
 Jessica Dubensky
 Steven Dubensky and Candice Joy Dubensky
 Eastport/South Manor CSD
 Norman H. Edelman, M.D. and Ida Edelman
 Glenn H. Edwards '80 and Lisa Edwards
 Empire National Bank
Douglas Manditch
 Ernst & Young Foundation
 Exxon Mobil Corporation
 Faculty Student Association of Stony Brook University
 Farrell Fritz, P.C.

Millie R. Fell, M.D. '83 and Dr. Alan Fell
Fifth Avenue of L.I. Realty Association
Flex 1 Realty, LLC
Tracy Pollan Fox and Michael J. Fox
Ralph Fresolone '73 and Jeannette V. Fresolone
Ellen Gaffney and Robert F. Gaffney
Gallery North
Elizabeth R. Garduno, M.D. '07 and
Alban I. Bailey, M.D. '03, '07
Ronald T. Garry, M.D. '92, '96 and Cynthia A. Garry
Dr. Berhane Ghebrehwet and Dr. Ellinor I. Peerschke
David A. Glazer '70, '74
Gleich, Siegel & Farkas
Dr. Perry Goldstein
Alphonzo Grant, Jr., Esq. '93, '94 and Isis D. Sapp-Grant '93
Greater New York Dental Meeting
Bo G. Ha, D.D.S. '04, '07 and Dr. Anthony Maniscalco
Lee Ann Hahne
Head & Neck Surgical Group LLC
Isaac Namdar, M.D. '89, '90, '94
Denise Logan Heuser, D.C. '80 and David F. Heuser, D.C.
Diane M. Hitchings-Tiernan '72 and John F. Tiernan
Zhengao Huang, Ph.D. '02
Frederick S. Hunte Jr., M.D. '07 and Nancy Koh '04, '12
Immunogen, Inc.
Innovatix, LLC
John P. Sganga
International Purchase Systems
Dr. Patricia Bourguignon Jacobowitz '79, '86, '09 and
Bernard Jacobowitz
Harry J. Janson, Sr. and Elizabeth A. Janson
Janson Shop Rite
Mercedes Jean-Charles '10
Dr. Samuel Carl Jones '77
Julia's Wish, Inc.
Jzanus, Ltd.
Robert Kahan '78 and Simone Kahan
Bryan J. Karp '05 and Jessica Karp '05
KASLL, Inc.
Tokufumi Kato, Ph.D. '01, '03, '07
James M. Keneally, Esq. '79 and Alyne I. Diamond '78
Peter S. Kim, M.D. '91
Dr. Chirakkal V. Krishnan and Nalini P. Krishnan
Ronald Lattanzio '79, '81 and Stacy J. Martin-Lattanzio
Louise Levien, Ph.D. '75, '79 and Robert G. Eby, Ph.D. '79, '81
Michael S. Lichtenberg and Lisa Antell
Lifecell

Sung-Jin Lim '92, '93, '94
Judith I. Lochhead, Ph.D. '76, '82 and George F. Fisher, Jr. '80
Long Island Charities Foundation, Inc.
Denise L. Loring, Esq. '76 and Peter V. Pantaleo, Esq.
Mahesh and Maheshwari Desai Family Foundation, Inc.
Carol G. Marburger
The Marilyn Colletta AML Foundation
Joseph Colletta
Mark J. Snyder Financial Services, Inc.
Mark J. Snyder '69 and Gloria B. Snyder '72
Dr. Shaun G. Massiah '93 and Deirdre Stanley
Susan McBride and Scott P. McBride
Mary A. McCabe-Bageac, M.D. '88 and Michael Bageac
Jane Elliott McCormack and Michael McCormack
A. Henry Von Mechow (posthumous) and
Sallie F. Von Mechow
Paul Jacques Mejean and Inger Mejean
Phillip Mighdoll '63, '66 and Sheila Dubman
Mine Safety Appliances Company Charitable Foundation
Catherine J. Minuse '72
Robert H. Montefusco '91
Law Office of Robert H. Montefusco, P.C.
Richard T. Morrison '96 and Mary Morrison
Richard and Mary Morrison Foundation
MSC Industrial Supply Co.
Gene E. Mundie '01
Denise Neiditch-Breger '68
New York Spine & Brain Surgery, UFPC
Lois B. Niles '76 and D. Justin Niles
Stephen D. Niles and Sara Niles
Daniel Fulham O'Neill, M.D. '83 and Maria O'Neill
L. Reuven Pasternak, M.D. and Nancy Pasternak
Steven R. Patrizio '89 and Ilene Patrizio
Pepsi-Cola Bottling Company
Susan Pikitch and Michael Giobbe
Dana Pollan and Mitchell Stern
Lori S. Pollan
Michael K. Pollan and Judith Belzer
Stephen M. Pollan and Corinne Pollan
Seth D. Potash, M.D. '88 and Linda Jacobs Potash
Protegrity Advisors LLC
Bruce Newman
Armand Quadrini
Qualcomm Flarion Technologies Matching Gift Program
Lorraine Ranftle and Gary Ranftle
Blake W. Reed '92
Regeneron Pharmaceuticals

John Risickella '82
Arthur P. Rosiello, M.D.
Noel B. Rowe
Carleen J. Russell and John F. Russell
Samuel Ryu, M.D.
S.A.S. Market, Inc.
The Sara Long Harte Memorial Scholarship Fund
Marc J. Scharf
Lisa Niles Schneiderman and Barry K. Schneiderman
Dr. William E. Schweizer III, M.D. '83 and Alison M. Schweizer
Kevin A. Seaman, Esq.
Seneca Park Zoo Society
Benjamin John Shea
Caitlin Shea
Ovais Sheikh
Siemens Healthcare
Michael Silber, M.D. '88 and Nancy S. Berg, D.D.S. '89
Dr. Melvin V. Simpson and Giulia Simpson
Skydance Productions, LLC
The Sloan Family Foundation
David Allan Smith, D.D.S. '07
Roger K. Smith '02
Softheon, Inc.
Southampton Bath & Tennis Club Charitable Fund
Dr. Gene D. Sprouse and H. Mae Sprouse
Leo M. Sreebny, D.D.S., Ph.D.
Jan Staller
Jonah M. Staller and Katty D. W. Staller
Joshua D. Staller and Jane Reid Staller
Jud A. Staller, M.D. and Donna L. Staller
Burt L. Stangarone '80 and Jean Stangarone
Dr. Peter Wesley Stephens and Bonnie W. Stephens
Dr. George F. Sterman and Elise R. Frank
Stony Brook Anesthesiology - UFPC
Stony Brook Children's Service - UFPC
Stony Brook Medical Associates, LP
Stony Brook Radiation Oncology - UFPC
Storch Amini & Munves PC
Suffolk County Girls Lacrosse Inc.
Suffolk Pediatric Center
Raymond J. Suris
Empire Lacrosse LLC
Dr. Paul A. Swartz
James R. Taylor Jr., M.D. and Maria Taylor
Tei Biosciences Inc.
Titans Baseball, Inc.

The TJX Foundation
Salvatore Trifiletti '76 and Carmelina A. Trifiletti '77, '82
Joseph L. Tromba, M.D. '77 and Suzanne Tromba
Stella E. Tsirka, Ph.D. and Michael A. Frohman, Ph.D.
UBS Financial Services
United Way of Long Island
University of Helsinki
Value Options, Inc.
Eva Swoboda, M.D. '01 and Lester L. Ward
Watercraft Irrigation
Tracey F. Weisberg, M.D. '83 and Verne Weisberg
Barbara N. Wien
Lee Anne Xippolitos, Ph.D. '81, '85

\$1,000 - \$4,999

1199SEIU United Healthcare Workers East
347 Associates, LLC
A. E. Artworks
A. Sanchez Construction Corporation
Amelio M. Sanchez
A. W. Sons Exhaust Inc.
Abbott Fund
Kevin J. Abrams, M.D. '86 and Judith Abrams
Michael E. Abrams, D.D.S. '82
Lynn Abramson, Ph.D. '07 and Ariel Abramson, D.D.S. '05
Shridhar Acharya '82, '86 and Suchitra S. Acharya
Denise M. Mohansingh Addoh '01, '02 and Jones A. Addoh, M.D. '01, '03
Dr. Rishimani N. Adsumelli and Dr. Siram Satyanath
Advanced Health Media
Advantage Title Agency, Inc.
Elmer C. Agustin, M.D. and Naomi R. Ham, M.D.
AIG Matching Grants Program
John Albanese
Judith Baron Albano
Christopher Alex
All Seasons Commercial Systems, Inc.
Scott Martone
All Systems Cogeneration, Inc.
Alliance Architecture, P.C.
Alliance Bernstein Matching Gift Program
All-Star Furniture Installations, Inc.
Alpha Phi Omega Theta Kappa
AlphaSource Advisors LLC

Altitude Express, Inc.
Raymond Maynard
Richard F. Amato, D.D.S. '83 and Nancy Romero
Ambalu Jewelers, Inc.
American Legion Auxiliary
American Legion Donald C. Munro Post 944
American Legion Harbor Post #417
Ameriprise Financial Gift Matching Program
Analytic Consulting Company
Michael R. Anastasio, Ph.D. '73, '76
Ryan P. Anatol
Anheuser-Busch Companies, Inc.
Anonymous
Answer Vending Inc.
Apex Scientific, Inc.
Apple Matching Gifts Program
Applied DNA Sciences Inc.
James A. Hayward, Ph.D '83
Arame Salon & Spa
Arcadia Management Inc.
William E. Arens, Ph.D. and
Diana M. Antos Arens, Ph.D. '73, '75, '79
Judith Aronstein
The Art of Coaching Volleyball LLC
Ronald Ashendorf and Sondra Ashendorf
Assouline Publishing
AT&T Foundation
Atlantic Detroit Diesel Allison
Ronald Atlas, Ph.D. '68 and Michel Atlas '69
Andrew Y. Au, Ph.D. '84 and Dr. Shirley Turner
Auxiliary Service Corporation
Kim D. Axelrad '84, '12 and Neal Axelrad
Cameca A. Bacchus '03
W. Walter Backus, M.D.
Claire Baer
Dr. Peter Michael Baigent
Dexter A. Bailey Jr. and Angela Bailey
Richard Thorton Baker '88 and Kathryn P. Baker
David A. Bamiro '05
Lisa E. Bancalari '84
bigBarclays Capital
Daniel W. Barrett '78
Beth Barth
Bayside Periodontics and Dental Implants, PLLC
Douglas H. Beaton
Cathleen L. Bechan-Dugan, M.D. '96
Erich Bechtel

Ronald Bellistri and Joann Bellistri
Leora Ben-Ami, Esq. '80
Linda H. Berenberg
Kenneth L. Berkson '86
Carl M. Bernstein
Jeffrey M. Bernstein '92
Eric Bernzweig, D.D.S. '89, '93 and Julie Bernzweig
Patricia Berrios
Johanna Biederman '92, '95 and Harry Biederman
Stanley L. Bileschi and Jean W. Swendsen
Thomas V. Bilfinger, M.D. and Celia B. Bilfinger
Bill Fox Co., LLC
Christopher Hughes Fox
Bimbo Bakeries USA, Inc.
Bishop McGann Mercy High School
BJK Real Estate & Consulting, LLC
Black Veterans for Social Justice, Inc.
Richard Block
Eric S. Blumencranz
Christopher P. Blumenstetter '05 and Kathryn Grace Keller '11
BNF Contractors, Inc
BNL Veterans Association
BNY Mellon
Jay L. Bock, M.D., Ph.D. and Mary K. Behling, M.D.
Victoria Bolling '08
Steven J. Bolotin '87 and Andra Bolotin
Aldo C. Bonardi '89 and Jadene Z. Butow-bonardi
James A. Borges and Nancy Borges
Alexis Boro, M.D. '98
Frank D. Bossert and Patricia E. Bossert, Ph.D. '87
George M. Brady '86 and Laurie Brady
Stephanie M. Branta '73
Harry P. Brett, Esq. '71 and Mary Jane Brett
Dr. Evelyn J. Bromet
Brookhaven Chapter of UNICO National
Brookhaven Eye Surgery, PC
Brookhaven National Laboratory LLC
Francine H. Brooks, M.D.
Nina Bryan
Denise E. Bugge
Edward J. Bullard, Jr. '94
Joseph Buonasera '05
Robert J. Burden '90 and Ann Marie Burden '90
Alice M. Burns '73
Dennis Burns
Marcia Bystryn
CA Technologies

James Cabaniss
Cablevision
James Cacioppo and Jennifer Cacioppo
Caithness Long Island LLC
The Calgary Zoological Society
David L. Calone and Kathryn Calone
Diane W. Caminis '67 and Pericles D. Caminis
John P. Campo, Esq. '76 and Nancy Davila-Campo
Matthew J. Campolettano '02
Campus Camps
Lenore Canavarros
Cape Branch Foundation
Rose C. Cardin '97 and Claude Cardin
Care and Comfort Associates
Patrick Carew
Carl's Equipment & Supply Inc.
Elof Axel Carlson, Ph.D. and Nedra A. Carlson
Gary Carruthers '04
Lennie J. Carter '02, '04
Carter, Deluca, Farrell & Schmidt
Rudolph H. Cartier and Mary Anne Cartier
Floris Barnett Cash, Ph.D. '86 and Ernest Cash
Thomas S. Catlin '74 and Diane E. Catlin
Morgan A. Cato '04, '05
Emily Jane Cauchi '13, '15
Cayuga Elementary School PTA
Steven Ceballos
CEG Live, Inc.
Celgene Corporation
Cemtrex, Inc.
Crista F. Cerrone, M.D. '10, '14
Sara Ann Cerrone, M.D. '08, '12
Jamie Allan Cesaretti, M.D. '99
Christian S. Chamberlain '94 and Danielle J. Chamberlain
Cheryl Chambers '01
Lap-Hung Sunny Chan, Ph.D. '80 and Jody Pinz Chan
Charity Buzz
David A. Charles '05
Mohan T. Chellani
Chemiclone, Inc.
Charles S. Chen, M.D. '81
David E. Chen '86, '88
Jin Chen, Ph.D. '06
Minghang Chen, Ph.D. '93 and Jing Han
Chesney & Nicholas LLP
Ashvin B. Chhabra, Ph.D. and
Daniela Bonafede-Chhabra, Ph.D.

The Children of Spencer Lane
David Ya-Ping Chiou '84
CHS Services
Anthony T. Cianci and Katherine Cianci '81
John H. Cierski '90 and Lydia Cierski
Clare Rose Inc.
Clinical Delivery System, Inc.
CMS Compliance Group, Inc.
Coastal Steward
Errol A. Cockfield Jr. '94
Tammy Colletti and Scott Colletti
Matthew J. Colson
Columbia University
Commack Union Free School
Commercial Instrumentation Services Inc.
James Gerardi
David M. Conca '96
David O. Conover, Ph.D. and Dr. Margaret Conover
Conrad Capital Management, Inc.
Construction & Realty Services Group, Inc.
Christina M. Conti and Richard Conti
Francine Conti and Charles Conti
Coram
Dr. Marvin L. Corman and Claudia S. Corman
Cornell University Foundation
Cornerstone Pharmaceuticals
Dr. Douglas T. Corwin, Jr., Ph.D. '90
Michael Vincent Cosentino '07 and Angela Cosentino
Anthony Couliandis
Stephen Gladston Council '09 and Morgan Cheric
Patrick '09
Covanta Energy Corp
CPL Productions Ltd.
Jeffrey B. Craig and Aisha Craig
Elizabeth Joy Craz and Peter B. Craz
Nicholas Aaron Culpepper '13
Jerry Curtin
Jerome J. Cymerman, D.M.D.
Cytokinetics, Inc.
Paul A. D'Alessio and Linda T. D'Alessio
Damianos Realty Group
The Damianos Family
Dan Klores Communications
Daniel Gale Agency, Inc.
Scott Daniels and Patricia Daniels
Stephen J. Dannhauser '72 and Beth Dannhauser
David Vallone PC

Barton H. Davis '71, '76 and Sharon Davis '73
Raphael P. Davis, M.D. and Phyllis Migdal-Davis, M.D. '92
Dr. William S. Dawes and Alice W. Dawes
Dawn Loughlin Attorney at Law
Dayton Foundation
DCE Consulting
Anastasia DeBonis '93 and Russell Debonis
Robert J. deBrauwere, Esq. '87 and Caryn J. deBrauwere '86
Decision 2000 Real Estate Services Inc.
DeepWater Wind
Dental Laboratory Group Inc.
Dental XP LLC
DePuy Orthopaedics, Inc.
Michael Seward Derice '08
Lorenzo DeVito, Jr. and Dawne Fulcher-DeVito
Nick DeVito
Alan S. deVries '80, '88
Linda Diaz '88
Genie Dibble
Joseph DiBuono '80 and Minerva DiBuono
James Paul Dilger, M.D. '75, '80 and
Dr. Kathleen Thomsen Dilger
Diligent Credit Solutions
Joseph V. Amella '77
Dr. Kenneth A. Dill and Dr. Jolanda Schreurs-Dill
Al DiVenuto '88, '94
Dixie Chiropractic
Philip C. Doesschate '91
Patricia K. Doherty '02
Dr. Patricia Dowds and David Byrom
Charles R. Downey '88 and Melissa Downey
Dr. L. Kamachi & Dr. D. Wong Kamachi
The Dr. Martin L. Stone Charitable Foundation, Inc.
Nancy G. Stone
Barbara Dragone
Carlee R. Drummer, Ph.D. '76, '89 and Michael J. Drummer
Theodore Dubinsky
Cathrine E. Duffy '93, '10 and Peter J. Duffy
Christopher Duma, M.D. '86 and Jessica Duma
Anne Marie Dunne-Rottkamp and David Rottkamp
Greg Duyck
E.S.I. Dental PC
Eastern Sanitation Service Corporation
Raymond Ebarb
Robert L. Eberle, M.D. '86 and Angela Mallozzi Eberle
Dr. Paul Jay Edelson and Leta I. Edelson
Geraldine L. Edwards, Ph.D. '78, '83, '87 and

Peter J. Edwards '75
EKP, Inc.
Eldor Contracting Corporation
Nicolaus Feldmann
Electromed Inc.
Elite Foreign & Domestic Auto LTD
Kevin McKittrick
Susan J. Emby and Charles Emby
Paul J. Emmanuel '86
Robert Emmerich, Jr. '95 and Carmela Emmerich
Empower Spinal Cord Injury
Enterprise Holdings Foundation
Dr. Mark D. Epstein
Michael P. Epstein '00
Ergonom Corporation
Michele Evenson-Lindsay and Scott Lindsay
Extreme Source Corp
Exxon Mobil Foundation
Diane Fabel '80, '99
James Fabian '84
Anthony Fabris and Dina L. Fabris
Joseph Michael Faiella '11
Jason M. Farina '99 and Christine Farina
Francis A. Farraye, M.D. '78 and Dr. Renee M. Remily
Khem Pradhan Fatimi and Zafar-ul-hasan Fatimi
Mayerlin Fattibene-Kanterman '06, '09 and
Eric Scott Kanterman '09
Michael A. Feiler, M.D. '79
Howard S. Feinberg '76 and Esther R. Feinberg
Dr. Arnold M. Feingold and Jeanne M. Feingold
Dr. Hongshu Feng
Joseph J. Fennessy
Fred S. Ferguson, D.D.S.
Harold Fernandez, M.D.
Steven P. Ferraro, Ph.D. '68, '80
Rosemary Ferrer and Carlos Ferrer
Marc Fierman and Helene Fierman
David Fiorella, M.D., Ph.D.
Elise E. Fishwick '77
Wendy Flanagan
Flexible Systems
Flooring Environment
John L. Fogarty
Kristi Foley
Foliot Furniture, Inc.
Ann Fossan
Foundation Care

Jeffrey R. Fox '73, '74 and Maureen L. Fox '73
Howard Frank and Mary Frank
Frank Family Charitable Foundation
Nancy J. Franklin
Diane E. Freedman, Ph.D. '93 and Judy Buitenrant
Nancy S. Freedman '85 and Richard Freedman
Laura Freeman
Carl R. Frey '74 and Susan J. Frey
Friends of Bradstock
Nicholas Gene Fucci
Jerald Michael Furphy '80 and Annemarie B. Furphy
Douglas J. Futuyma, Ph.D.
G. Forte Construction Co.
Yves A. Gabriel, M.D. '91 and Lori Gabriel
Dennis Galanakis, M.D. and Mary A. Galanakis
Robert Galler, M.D.
Rosemarie Gallinari '83 and Peter Gallinari
Dr. Kathleen Jordan Gallo '89 and Leonard L. Gallo Jr.
Dawn Marie Gambacorto and Guy Gambacorto
Sandeep A. Gandhi, M.D. '91 and Suhani S. Gandhi
Garden of Eve Farm
Eve Kaplan-Walrecht
John T. Gattis '09
Geico Philanthropic Foundation
Gem Research Solutions LLC
Kalliope Gemelas
General Electric Foundation
Anthony Gentile, D.D.S. and Kim Gentile
Dr. Peter Gergen and Jamie B. Gergen
Gershow Recycling Corporation
Thomas Ghents and Darlene Ghents
Gregg J. Giampaolo '82 and Cindy Giampaolo
Lucille A. Giannuzzi, Ph.D. '85, '87
Randall G. Gianopulos and Eleni Gianopulos
John G. Gioia
Dean E. Glasser, D.D.S. '81 and Gladys Glasser
Barry Jay Goetz, M.D. '01
Gold Coast Bank
Ruth J. Gold
Gold Wing Road Riders NY K
Jerry Golden and Marge Golden
Steven M. Goldfine, Ph.D. '85
Helene B. Goldstein
Dr. Lorne Golub, D.M.D. and Bonny Golub
Roberta Marie Gomes
Amy Goodfriend and Sidney Goodfriend
Goodman Media International Inc.

Elaine Gordon and Robert Gordon
Michael W. Gramer '04
Iris Ann Granek, M.D. '95
Lucy Grasso
Great Neck South High School
Arthur Green
John Hunter Greene '05
Kathleen L. Greene
Todd R. Griffin, M.D. '93
Judge Donna L. Groman '76 and Cecilia Quigley
Guardian Life Insurance of America
Vincent Guarino and Christine Guarino
Arthur S. Haas and Martha McGaughy
Dr. Gail S. Habicht and Dr. Ernst R. Habicht, Jr.
Simon Halegoua, Ph.D. '74, '78 and Perla Halegoua
Hamari Chemicals
Richard Hamburg, M.D. and Christine Smith
The Hamptons Health Society, Inc.
Guowen Han, Ph.D. '06
Robert E. Hansen, Jr. and Cathleen Hansen
Renee Harbers
Harbour Club, LLC
Dr. Thomas L. Hardie '82, '86 and
Margaret M. Hardie '84, '88
Thomas P. Harkins '90 and Suzanne Harkins '90
Laureen Harris
Wayne S. Harrison, D.D.S. '79
Barbara J. Hart and John J. Hart
Henry M. Hauptman '76
Nigel Havers and Georgiana Havers
Hawkeye Elecnor Group
Gilbert S. Hayat, Ph.D. '69, '72 and Claude Hayat
Hayden-McNeil Publishing
James A. Hayward, Ph.D. '83 and Judy Carol Hayward '83
Health Day
HeartWare Inc.
Linda L. Hobson Heath '08 and Rodney Heath
Shawn Heilbron
Karen Helfrich
Karen Helfrich and Peter Helfrich
Herman Goldman Foundation
Gudjon Hermannsson, Ph.D. '89, '93 and
Yingxing Wang '89
Kevin Hibbert
Kevin N. Hibbert, M.D.
Hinck Electrical Contractor, Inc.
Maureen Hinkelman

Martha Hirsch '78
Eddie Kasing Ho, M.D. '88
Dr. John D. Hobbs and Dr. Ann K. Hobbs
Gary S. Hom '73, '79 and Theresa Y. Hom '77
Keith J. Hom '79 and Kerri M. Collins
Molly Hopkins and Timothy J. Hopkins
Marilyn A. Horan
Mark E. Horowitz, M.D. '83 and Dorrine Veca
Jason W. Hsueh and Ei-Wen Yang
Ryan Daniel Hughes '08
Dah-Ren Hwang, Ph.D. '82 and
Yuying Chen Hwang, Ph.D. '84
Vincent J. Iacono, D.M.D.
IBM, Inc.
Don Ihde, Ph.D. and Linda Einhorn-Ihde '71
Dr. Mary Inagami
In-House Partners
Alan L. Inkles '83, '90 and Susan Inkles
Iris and Saul Katz Family Foundation, Inc.
Iris and Saul Katz
John Isolano
Italian Heritage Association Inc.
J.R.C. Air Conditioning and Refrigeration, LLC
Saam Jalayer '98
Solan A. James '98
JATO Building Contractors, Inc.
Patrick Jenkins '90 and Dawn Cotter-Jenkins '91
The Jennifer and Frank Marzano Charitable Fund
Jewish War Veterans Of The United States of America
John Paul Electric, INC.
John R. Anton, M.D., FACS
Coula Johnides
Johnides Family Foundation
Johnson & Johnson
A. Stephen Johnson
Denise R. Johnson
Lynn M. Johnson and Peter D. Johnson
Suzanne Bennett Johnson, Ph.D. '74
Adrian Jones
Dan Jones
Guenter J. Jonke, D.M.D. '82 and Victoria B. Jonke
Douglas C. Jordan '89 and Laurie Catizone -Jordan
Joseph R. Loring & Associates, Inc.
JP Morgan Chase Foundation
JTE Enterprises, Inc.
Judith and Paul Hochhauser Foundation, Inc.
K & R Design Enterprises

Kevin C. Clark
Stanislaus A. Kaczmarek '76 and Diane E. Kaczmarek '77
Michael B. Kaczmarski and Sophia B. Kaczmarski
David S. Kahn
Dr. Peter B. Kahn
Stuart Kahn, M.D. '88
Songul Karagoz
Kaufman Charitable Fund
Moss J. Kaufman
Jeffrey A. Kaufman and Wendy Kaufman
Anupreet Kaur '09
Kenneth Kaushansky, M.D. and Lauren E. Kaushansky
Victoria Lyn Kavitsky '10
Ronald James Keenan '04
Thomas Kelly
Susan Blum Kenigsberg, Esq. and Dr. Daniel Kenigsberg
Shirley Strum Kenny, Ph.D. and Robert W. Kenny, Ph.D.
Steven Kent '85
Anbreen R. Khan '92
Daniel M. Kim '02
Jason M. Kim, M.D. '03
Jungsuh Kim and Jong H. Kim
Kimberly-Clark Foundation
King Kullen Grocery Co., Inc.
Rebecca J. Kirschbaum '70
Daniel N. Klein, Ph.D. and Deborah Lowen-Klein
Knights of Columbus Council 6893 Brother Dawson Squires
Knights of Columbus Donald J. Burns Council 13588
Robert D. Knox '89 and Kathy T. Knox, D.D.S. '03
Elena Kogan, D.D.S. '00
Dr. Andrew M. Kolchin '82
Sacha Kopp, Ph.D. and Gretchen Kopp
Korean War Veterans Central Long Island Chapter
Samuel Barry Kornhauser and Pamela R. Kornhauser
Kathryn A. Koshansky
Sharon A. Kratochvil, Ph.D. '80, '82, '86 and
Nicholas Kamillatos '79
Barry K. Kreger and Christina A. Kreger
Dr. Steven Krupp and Dr. Deborah Krupp
Tobie A. Krupp
Dr. Olena Ksovreli
May Ku '86
Dr. Allan J. Kucine
Richard J. Kuhn, Ph.D. '81, '86
Kara H. Kvikval, M.D. '83
Paul Kylap
L.I. Adventureland, Inc.

L.I. Multiple Sclerosis Nurses Society, Inc.
Alex Lachmayr and Jennifer Lachmayr
Ann C. Mandel Laitman, M.D. '78 and
Robert S. Laitman, M.D.
Lakeland Plumbing & Heating
Jason W. Lantier '03
James P. Lanzilotta '90, '94 and Joanne Lanzilotta
Tsvi Lapidot '80 and Lisa Lapidot
Joseph Lapietra '00 and Louise Lapietra
Dr. Richard K. Larson and Dr. Susan G. Larson
Carey F. Lathrop '84
Launchpad LI LLC
Laurel Park Elementary School
The Honorable Kenneth P. LaValle and Penny LaValle
Kathleen Lawrence
Dr. William E. Lawson and Dona J. Hills
Daniel E. Lazaroff, Esq. '71
Lazersharp Plumbing & Heating, Inc.
Dr. Herman Lebovics
John J. Leddy, Jr. '76 and Diane Leddy
Donna Lee, M.D. '90
Dorothy Kim Lee, Ph.D. '75, '80 and Victor C. Han
Peter Lee '03
Shyh Yuan Lee, Ph.D. '70, '72
Stephen Lee '82, '84 and Nora W. Lee
Young Ah Lee
Legend Land Abstract LTD
Susan E. Leister
Lloyd D. Lense, M.D. and Susan Ellen Lense, M.D.
Ellen B. Leonard, M.D. '83
Michael Levenstein, M.D. '81 and Deanna Palumbo
Marvin Levine, Ph.D. and Mara Levine
Brian Levitt
Leonard A. Levitt '72 and Lucille A. Levitt
Victor Levy, M.D. '81
Lewis, Johs, Avallone, Aviles, LLP
Charlene Precker Liblit
Robert C. Liebermann, Ph.D. and Barbara N. Liebermann
Life Science Exhibits

Yun-Chich Lin, Ph.D. '74, '78
Liro Program & Construction Management, PC
John M. Lizzul '75 and Catherine Lizzul
Local 338 RWDSU/UFCW
Local Union No. 361 of the IAOBSSO Iron Workers
Loeb & Troper
James Sean Logan '85 and Anne C. Logan '92

Manuel London, Ph.D. and Marilyn M. London, Ed.D.
Long Island Bagpipes
Long Island Eye Surgical Care, PC
Long Island Health & Wellness Family Medicine, P.C.
Long Island Oceans, Inc.
Long Island Paneling Centers, Inc.
Jeffrey H. Long '72 and Lory E. Bright-Long, M.D.
Kiran Ariel Lorick '12
Geraldine M. Losquadro '72 and Lynne D. Moyer
Xiaodan (Danny) Lu, Ph.D. '96, '98 and Ru Zhang '95
Sara M. Lutterbie '93 and Dr. John H. Lutterbie
Sally Anne Lynch, Ph.D. '82, '88
Beverly MacDonald
Mark A. Maciulaitis '78
Ryan J. Maehr '09
Thomas E. Main '73
Alicja K. Malecka '72
Malecka Int'l. Consulting, LLC
Andrew J. Maliszewski '80, '82 and
Sandra C. Maliszewski '81
Laurie Malkoff, M.D. '99 and Fredric Leffel
Louis Manganas, M.D. '94, '04 and Tina Monias
Manhattan Beer Distributors LLC
Peter J. Manning, Ph.D. and
Susan Elizabeth Scheckel, Ph.D.
Joseph A. Mannino, M.D. '95 and Cynthia A. Mannino
Manzoni Real Estate, Inc.
Raymond Manzoni
Margolin, Winer & Evens LLP
Dr. Marie Ann Marino '89 and Vincent J. Marino
Reuben Mark and Arlene Mark
Dr. Gary J. Marker and Ann S. Brody
Nancy C. Reich Marshall, Ph.D. '83 and
Dean C. Marshall '85
Dr. Lawrence B. Martin and Wendy Martin
Janet T. Martino, M.D. '83
Masonic Veterans Service Assoc Stony Brook
Mass Mutual Financial Group
Massapequa Kiwanis Foundation, Inc.
Massapequa Park Periodontics PC
Laura A. Mastriano
Michael A. Matilsky, M.D. '82
M. Kathleen Matthes and Anthony G. Matthes
Dr. Jack Shafer Mattice '63 and Yorkette R. Kleinman
John M. McClave '84, '85 and Namphuong Hoang '83, '85
Caroline McCombs
Richard J. McConekey '95 and Sandra I. McConekey

Dusa McDuff, Ph.D. and John W. Milnor, Ph.D.
Christopher S. McGovern '03
Tammy McGuire
James McNeil Jr.
McReg Industries, Inc.
Brian E. McWilliams '78
Thomas P. Meaney
Media Group Management Inc.
Medline Industries
James Megna '89 and Kerri A. Megna '91
Peter T. Meinke and Wei Chu, M.D.
Daniel R. Melore '90 and Kristy G. Melore
The Meola Firm, PLLC
Merck & Co., Inc. /The Merck Foundation
Merck Sharp & Dohme Corp
Laureen Mercurio
Metropolitan Youth Society of New York
Kenneth W. Meyer '77 and May Shiu Kots Meyer
Michael T. Clancy, Esq. '81
Dennis Michel '75 and Stella Michel
Daniel Mark Michitsch '07
Linda Mignone
Edward D. Miller and Carol A. Miller
Barbara M. Mills '93, '09 and Dr. Carl Mills II
Minnesauke Elementary School and PTA
Mitchell Giurgola Architects, LLP
Mary L. Molinari '78 and Paul J. Molinari '71
Molnycke Health Care.
Moloney's Lake Funeral Home, LLC
Douglas A. Monticciolo '84, '85 and Michelle Monticciolo
Deborah L. Moody, M.D. '84
Daniel Thomas Moran, D.D.S. '79 and Karen K. Moran
Arlene M. Morgan and David J. Morgan
Mother Cabrini Knights of Columbus
Muchnic Foundation
Jishnu Mukerji, Ph.D. '82
Loretta B. Mulle '77
Nathan Muller and Jacqueline Brooks-Muller
Michael F. Murdoch '78, '80
Muriel & Bert Brodsky Family Foundation
Brian P. Murray and Anna M. Murray
William V. Murray, Ph.D. '79 and Christine M. Taday
Myriad Genetics
N&V International
Nancy Burner & Associates P.C.
Nancy Burner
Amalia Napoli and John Napol

Joseph A. Nardi '77
Nassau County American Legion
Jennifer Ann Nassour, Esq. '93 and Charles J. Brucato III
National Corvette Restorers Society
National Veterans Service Commission
Nancy L. Neff '72
Nessakeag Elementary School
Network For Good
New Hampshire Charitable Foundation
New York Academy of Dentistry, Inc.
New York Sportfishing Federation Inc.
New York State Association for Solid Waste Management
New York State Council Knights of Columbus Charities Inc.
Euane J. Newen, D.D.S. '97
Newlight Management, LLC
Robert M. Brill
Dr. James Nicholson and Barbara Nepf
Dr. Peter Van Nieuwenhuizen and Marie Van Nieuwenhuizen
Joyce B. Niles and William Niles
Samir Ali Nizam '76, '78 and Mounia Nizam
Joyce Noonan
Kevin Noonan '88 and Sophia Christophides
Norquest Capital LLC
Hans Nordemann
North Shore Implant & Oral Surgery Associates, PC
Northrop Grumman Corp. Charity Trust
Jerome Noto '90 and Heather M. Noto '91
Novadaq Corp
Beth Nowers
Ocean Sanctuary Alliance
Ocean State Job Lot Charitable Foundation
Octapharma
Off-Loading Technologies
Dr. Brian M. O'Keefe, D.M.D. and Cristina R. O'Keefe
Robert G. O'Keefe, M.D. '74 and Kathy O'Keefe
Chimezie T. Okobi '05
David John Olczak '08 and Sue A. Olczak
K. Daniel O'Leary, Ph.D. and Susan G. O'Leary, Ph.D. '72
Edith Onwuazo
Juliana Mariana Opatich, M.D. '79 and Richard Lulenski
Options For Community Living Inc.
Our Lady Of The Rosary Council 4428
Soo Peter Ouyang, Ph.D. '78, '82
James M. Paci, M.D. and Stacey Mon Paci
Donna C. Paglia '88 and Matthew DeSutter
Hannah Pakula
Dr. Philip F. Palmedo and Elisabeth S. Palmedo

Allison Ralph Palmer, Ph.D. '73
Pamper Decorating
Chanjuan Pan '00
Todd Panzner and Becky Panzner
Dr. John B. Parise and Alyse J. Parise '91
Sumner Parker
Anthony M. Parlatore, Esq. and Suzanne S. Parlatore
Ronald Parr and Barbara Parr
Ramin V. Parsey, M.D., Ph.D. and Gayten Bouzane, M.D.
Corrine Paston
Patchogue Community Service Foundation
Patchogue Medford UFSD Classroom Activity Fund
Roma Patel
Peconic Lodge 349 F & A.M.
Paul Pecorino, Ph.D. '86
Paul E. Pedisich, Ph.D. '93, '98
Kresimir Penavic '92 and Suzanne Penavic
Dr. James Penna and Debra A. Penna
Rosalind Perdomo-Ayala '96 and Joseph Ayala
Mary C. Persky and Jim Persky
Pete DeVito Memorial Foundation
The Pew Charitable Trusts
Pfizer Foundation Matching Gifts Program
Pfizer, Inc.
Robert Phang, M.D. '97 and Melissa J. Dalzell, M.D. '98
Joan A. Phelan, D.D.S. '77 and Gerald F. Phelan
Dr. Anthony V. Phillips
Joseph J. Piccininni '02 and Marietta Piccininni
Shirley A. Pierce '75
Dr. James Pierre-Glaude '06, '10
Richard Pimentel II '06
Sahan Buddhika Pitigala '08
William G. Pletka
Kenneth F. Plifka '81 and Deborah Jeanne Plifka
Sunitha Polepalle, M.D. '92
The Presser Foundation
Pride Carpet, Inc.
Principle Business Enterprises
PSEG Long Island LLC
Shichun Qu, Ph.D. '97
Michelle T. Chin Quee
Quinn & Feiner Service Co.
Judith A. Raab and Charles A. Raab
Radical Philosophy Association of Butler University
Ali Ramaliu
Adam Rand '12
Milin S. Rao '00

Rapid Armored Corp
Stephen M. Raucher
Raytheon Company
Patricia A. Rebecchi
David W. Reimer and April R. Reimer
Leon M. Reimer and Elayne S. Reimer
Steven A. Reiss and Mary Mattingly
Releve' Dance Centre
Mary M. Remmler '88, '93
Robert P. Renner, D.D.S. and Dr. Purobi Phillips
Renu Contracting & Restoration, Inc.
Scott Colletti
Edward Repper '91
RespirTech
Gerald T. Reynolds
Paul Rickard Sr. and Maureen Rickard
Rising Sons Maintenance, Inc.
Risk and Insurance Management Society, Inc.
Louis M. Rispoli and Mary M. Rispoli
Dr. Charles Robbins and Roni Robbins
Dr. William D. Roberts
Robin Hurt Safaris Ltd.
Merle S. Robinson, M.D. '83
Gary S. Roboff and Farron V. Roboff
Sari Roboff
Rockland Research Corp
Ronald W. Roge and Rosanne Roge
Gary M. Romano '93 and Karen O'Brien
Ronald McDonald House of Long Island
Michele P. Rooney, M.D. '90 and Fernando DeCarvalho
Melanie H. Rosenblatt, M.D. '86, '91
Debra Rosenquist '06
Thomas A. Rosenquist and Debra L. Rosenquist
Helene R. Rosenzweig, M.D. '83
Rossi Foundation
William Rossi and Alice Rossi
Salvatore G. Rotella and Pilar Vives Rotella
Rachel Roth
Richard Rubinstein and Pamela Rubinstein
Pamela & Richard Rubinstein Foundation
Ruskin Moscou Faltischek, P.C.
Michael Russell
Sean M. Russell and Maryellen McQuade-Russell
Maria Lynne Ryan-Baldwin
S & P Daniels, Inc.
Peter Saad
Jayne M. Sabbagh and George R. Sabbagh

Adam T. Sabia '03 and Ashley Sabia
Sachem North High School
Dr. Carl Safina and Patricia Paladines '08
Bedel Saget '88
Dr. Mark Saidens '68 and Mona Saidens
Salierno & Tangredi Dental PC
Umit David Sami '07
Filip S. Sanders and Josephine E. Sanders
Sanders Foundation
Linda L. Sanders and Michael Lockhart
Sanna Mattson MacLeod, Inc.
Andrew Lloyd Saraga '07
Tracie A. Saunders, M.D.
SB Clinical Practice Management Plan, Inc.
Robert P. Scanlan '91, '92 and Valerie Scanlan
John A. Schaeffer
Jeffrey M. Schajer '78 and Carol Schajer
Dr. Marylou J. Lionells Schimel '61
Schindler Elevator Corporation
Estelle Schlossberg and Martin Schlossberg
Howard S. Schneider and Ilene R.W. Schneider
Dr. Robert F. Schneider
Carrie Schulman and David Schulman
Sam Schwab and Lyn Schwab
Edward B. Schwartz '77
Robert A. Schwartz '75 and Ellen Sydney Brown
Diane G. Scillia, Ph.D. '67
SDM Metro
The Seattle Foundation
John C. Seeberg
Haig Seferian
Roberta J. Seidman, M.D. '83 and John G. Fleagle, Ph.D.
Fred S. Sganga and Marianne Sganga
Dr. Magdy Shady and Heather Brin Shady
William Shakin
Dr. Yacov Shamash and Linda S. Shamash
Jinfan Shaw '76, '81
Steven M. Sheinman, M.D. '83
Ralph C. Shelley '76
Lauren M. Sheprow
David A. Sherman, D.D.S. '04
Judith Shevrin and Howard Shevrin
Dr. Jessie Shih '72
Jon Shirley
Shop Rite of Hunterdon County, Inc.
Susan Shor '78
Kenneth R. Shroyer, M.D., Ph.D. and Annie Laurie L. W.

Shroyer, Ph.D., M.S.H.A.
William A. Siegel and Barbara J. Siegel
David Mark Silberhartz, M.D. '80 and Jamie Silberhartz
Robert M. Silverberg and Denise Silverberg
Andrew S. Simmons '74
Simplex Grinnell
Beverly Sinkin and Donald Sinkin
Slaper & Lapidot LLP
Tara Slone-Goldstein and Wayne Goldstein
Tamara J. Slobodkin
Jonathan R. Small '88 and Heather Small '88
Smartlinx Solutions, LLC
George Ellsworth Smith
Jeff Smith
Thomas Richard Smith Jr.
Theodore H. Sneed
Software People Inc.
Jonathan P. Sorbera '98
Spa Products Import & Distribution Co., Inc.
Howard E. Spector, D.D.S. '77
St. Joseph High School
Lois A. Stafford '77 and Robert W. Stafford '72, '82
William K. Stanley '92, '10
Michael J. Stapler and Deborah Stapler
Star of the East #843
Starlight Children's Foundation
Bruce Stasiuk
Dr. Jerrold L. Stein and Judith Stein
James C. Stekas, Ph.D. '75, '81 and Stephanie Novak
Sterling Glass of New York
James R. Sterling, M.D. '92 and Angela M. Stelling
Mimi K. Stern '84 and Jack T. Stern, Ph.D.
George Michael Stimola '09
Dr. Diane M. Stockinger and William J. Stockinger
Gerald Stokes
Stony Brook Dental Associates, Inc.
Stony Brook Emergency Physicians UFPC
Stony Brook Gynecology & Obstetrics, PC
Stony Brook Pathologists UFPC
Strong Island Derby Revolution LLC
Alyssa Marie Struzenberg '10
Suffolk County Council VFW
Suffolk County Dental Society of NY
Suffolk Masonic District Foundation, Inc.
Suffolk Piano Teachers Foundation
Suffolk Surgery Center LLC
Michael Sullivan

Anna Z. Sun '95 and John Sun '93, '96
Surgiquest Inc.
Howard R. Sussman, M.D. '92, '96 and Sherry K. Suss-
man, M.D. '91, '95
Thomas F. Swartz '86 and Olivia Szabo
Eric D. Swenson '93 and Deborah C. Swenson
Sysco Long Island LLC
T.B. Supermarket Carts Inc.
Charles S. Taber, Ph.D.
Tackan Elementary School
Taconic Capital Advisors LP
Arnel M. Tagle, M.D. '95 and Nanette Steinle
Dr. Leon A. Takhtajan and Tatiana Akimova '93
Amy J. Talanker '72 and Peter J. Duggan
Tangier Smith Elementary PTO
Dr. Philip C. Tarantino and Jennifer Coppola-Taran-
tino '07
John E. Tatar '81 and Maude Anderson Tatar '82
TDI USA Holdings Corp.
Team Daniel Running for Recovery
Tech 4, LLC
Dr. Ann Y. Teng '01, '04
Jesse E. Tepper '72
Jeffrey P. Terry '00
Teva Pharmaceuticals
Andrew S. Thomas and Kathleen Thomas
Dr. Jill B. Thompson
Three Village Women's Health, LLP
Tiffany & Co.
Miguel V. Tillman '78 and Linda M. Tillman
Roberto E. Tillman '78
Norman L. Tolle '69 and Leanne Tolle
Michael Tom '98
Tomra North America
Rabbi Joseph S. Topek and Susan Remick Topek
Tosoh F-Tech Inc.
Touro College
Town of Brookhaven Local Development Corp.
Tritech Healthcare Management
Tromel Construction
Mary R. Truhlar, D.D.S. '84 and Richard S. Truhlar,
D.D.S. '83
Truist
Robert Y. Tsai '84
Amanda Tucker
Joyce Moore Turner
UBS

United University Professions Stony Brook Chapter
United Way of San Diego County
Unitex/A&P Coat, Apron & Linen Supply
US Foods
V.J. Technologies
Lorraine W. Vagner '70
Christina Valentine and Kalliope Valentine
Vanasse Hangen Brustlin, Inc.
Dr. Joyce Varughese-Raju
Richard Vengroff, Ph.D. '67 and Cynthia H. Vengroff
Veracyte Inc.
Verizon Foundation
VFW Post 3054
Vietnam Vet Riders
Lisa A. Vignogna-Barlas, M.D. '96 and David Barlas
Irene M. Virag and Harvey Aronson
Gerard A. Virga '76 and Stacey E. Nathan-Virga '78
Wendy L. Wahl, M.D. '88
Wakefern Food Corporation
Lynsert Walcolm '02, '03, '04
Arnold Waldman and Sara Waldman
Waldner's Business Environments, Inc.
John Thomas Walsh '89
Changwei Wang '13
John Warasila
Robert L. Warasila, Ph.D. '66, '76 and Anna Warasila
John Raymond Warkentin, M.D. '70
Water Lilies Food, Inc.
Eileen Weber '64
Donald Webster and Karen N. Webster
Hildegard G. Weigel '61 and Manfred Weigel
Martin B. Weinbaum '87 and Cathy Bischoff
Patricia A. Weisenfeld '83
Gloria M. Weiss
Ronald Wender, D.D.S.
Matthew Whelan, Ed.D. and Kathleen G. Whelan
Andrew C. White, Ph.D. '88, '93 and Susan M. White
Whole Foods Market
Jeffrey Wien and Karen Wien
Ray C. Williams, D.M.D.
Earl C. Willoughby
Dr. Paul H. Willoughby '85 and Katuschka Nunez
Willoughby
Scott E. Willoughby '84 and Miwako Willoughby
Wilson, Elser, Moskowitz, Edelman & Dicker LLP
Dr. Charles E. Windus Jr., Ph.D. '73 and Paula C.
Windus

Winthrop University Hospital
 Judith Passof Wishnia, Ph.D. '69, '78 and Dr. Arnold Wishnia
 Gerrit G. Wolf, Ph.D. and Ann G. Wolf
 Carol Wolowitz and Arnold Wolowitz
 Christina Ruomeng Wong '04
 Kim Fan Wong '80 and Christine Ng '81
 Dr. Henry H. Woo and Dr. Eydie Woo
 Suzanne M. Wood
 Donna Woodruff
 Kenneth Wright and Megan Wright
 John Robert Wulforst '11
 Dr. Amos Yahil and Ludmila Melchior-Yahil
 Scott Yanuck '87, '93 and Barbara L. Yanuck '88
 Barima Yeboah '01, '06
 Han Chung Yeh '80 and Ping Ping Yeh
 Wendy Yohannan-Conner, M.D. '85 and Calvin Conner
 Young Adults Institute, Inc.
 Pui Fan Yu
 Dr. Michael X. Zelenak and Nancy Weeks
 Howard R. Zern '68 and Dr. Hilary E. Freedman
 Jiangying Zhou, Ph.D. '93
 Zimmet Healthcare Services Group, LLC
Marc N. Zimmet
 Alice Jean Zuccaire

FOR A COMPLETE LIST OF ALL FISCAL YEAR 2014-2015 DONORS, PLEASE CLICK HERE.

1957 FOUNDERS SOCIETY

The 1957 Founders Society pays special tribute to donors whose cumulative realized lifetime giving to Stony Brook has reached \$1,000,000. This listing recognizes the exemplary donors who reached this milestone as of the end of the fiscal year on June 30, 2015.

Alan Alda
 Barbara Anderson
 Anonymous
 Lalit Rai Bahl, Ph.D. and Kavita Kinra
 The Bernard Osher Foundation
 CA Technologies

Carol M. Baldwin Breast Cancer Research Fund, Inc.
Carol M. Baldwin
 Cherith Foundation
Scott Chen and Yilin Wang '07
 Chern Medal Foundation
 Matthew J. Cody (posthumous) and Debra A. Cody
Cody Family Foundation
 Cold Spring Harbor Laboratory
 Michael R. Corey and Emilie Roy Corey
 The Corey Foundation
 Dr. Stephen A. Della Pietra and
 Dr. Pamela Hurst-Della Pietra
 Dr. Vincent J. Della Pietra and Barbara J. Amonson
 DENG Wei, Ph.D.
Bright Oceans Corporation
 Miki G. Donoho, Ph.D. and David Donoho, Ph.D.
 Glenn Dubin '78 and Eva Dubin
G & E Dubin Family Foundation
 Margot Ammann Durrer
 The Fernwood Foundation
Ian and Nancy Telfer
 Robert B. Frey, Ph.D. '80, '87 and Kathryn B. Frey
Frey Family Foundation
 Gabriella & Paul Rosenbaum Foundation
 Ambassador Charles A. Gargano
 Richard L. Gelfond '76 and Peggy Bonapace Gelfond
 Evelyn Grollman Glick
 Stuart D. Goldstein '74
 Dr. James R. Herrnstein and Dr. Robin M. Herrnstein
 Island Outreach Foundation Inc.
David Knapp and Michele Knapp
 Walter B. Kissinger
The Kissinger Family Foundation
 William L. Knapp '78 and Jane T. Knapp '78
 Priscilla S. Knapp
 Knapp Swezey Foundation
 Henry B. Laufer, Ph.D. and Marsha Zlatin Laufer, Ph.D.
 Laurie Landeau Foundation LLC
 Dorothy Lichtenstein
 Lisa J. Lourie
 Dr. Robert W. Lourie
 The Lourie Foundation, Inc.
 John Macrae III and Paula Cooper
 Nirmal K. Mattoo M.D. and Augustina Mattoo
 Estate of Philip J. McGrath
Philip J. McGrath and Carolyn J. McGrath
 MJS Foundation

Richard T. Nasti, Esq. '78 and Maura Nasti
 Northrop Grumman Corporation
 Paul W. Zuccaire Foundation
Alice Jean Zuccaire
 Pollock-Krasner Foundation
Charles C. Bergman
 Renaissance Technologies LLC
 The Robert David Lion Gardiner Foundation Inc.
 James H. Simons, Ph.D. and
 Marilyn H. Simons, Ph.D. '74, '84
 Simons Foundation
 The Staller Family
 Suffolk County Volunteer Firefighters Burn Center Fund
 Symbol Technologies Inc.
Dr. Jerome Swartz
 Thaw Charitable Trust
Eugene V. Thaw
 Thomas Hartman Foundation for
 Parkinson's Research Inc.
 University Hospital Auxiliary
 Estate of Emil C. Voll
 W. K. Kellogg Foundation
 W. M. Keck Foundation
 Charles B. Wang
 Whitaker Foundation
 William and Maude Pritchard Charitable Trust

JOHN S. TOLL HERITAGE SOCIETY MEMBERS FOR 2014-2015

The John S. Toll Society was established in 1994 by the Stony Brook Foundation to honor Dr. John Sampson Toll, former president of Stony Brook, and to recognize his contributions and commitment to excellence in higher education. Our University community is proud to honor the legacy of the late Dr. Toll through this special society of individuals, living and deceased, who have made planned gifts to the Stony Brook Foundation, including bequests, life-income gifts, irrevocable or revocable trusts, retirement plans, insurance policies, and other planned gifts.

Stacy Ackerman '71
 Julia V. Ashley, MD '75

D. Frederick Baker
 JoAnn E. Becht
 Andrew K.G. Beck '75
 Barbara Bentley, PhD and Glenn D. Prestwich, PhD
 Evelyn Berezin
 Elof Axel Carlson, PhD, and Nedra A. Carlson
 Bridget Chang
 Eleni Bacola-Ciaccio. MD
 Marie Coleman
 Evan Steve Crandall, PhD '75, '81 and Sukie Davis
 Crandall '80
 Julia de Zafra, PhD and Robert de Zafra, PhD
 The Honorable James F.X. Doyle '83
 Estelle Cona Druian
 Itona E. Ellinger, PhD
 Howard Feinberg '76
 Sally S. Flaherty
 Roberta Fox '81
 Don D. Getz and Ethel J. Getz
 Aaron W. Godfrey and Valerie M. Godfrey '77
 Carl E. Hanes Jr. and Constance M. Hanes
 Mary Anne Hansen
 Don Ihde, PhD and Linda Ihde
 Radmila Inke
 Mildred A. Kalish
 Moss Kaufman
 Joseph Kelly
 Robert C. Kerber, PhD
 Charles W. Kim, PhD and Soo J. Kim
 Howard Klein '69
 Carol Klemm
 Jane T. Knapp '78 and William L. Knapp '78
 Thomas Kranidas, PhD
 Mara Levine and Marvin Levine, PhD
 Donna Lipresti and Peter Lipresti '74
 Ying H. Liu '83
 Denise Logan-Heuser, DC '80 and David F. Heuser, DC
 Alicja K. Malecka '72
 Sylvia H. Meltzer
 Linda E. Merians, PhD
 Marie Mettler
 Richard B. Meyers
 Phillip Mighdoll '63, '66
 Daniel Thomas Moran, DDS '79 and Karen K. Moran
 Nancy D. Mullan
 Harris Palmer

.....

Sheila L. Payne
R. Ronald Rau, PhD
Lauren Reimers
Robert P. Renner, DDS
F. James Rohlf, PhD and Janice Lee Rohlf '80, '89
Michael A. Sabol
James H. Simons, PhD and Marilyn H. Simons, PhD '74, '84
Molly Snizek and William Snizek, PhD '63
Gloria B. Snyder '72 and Mark J. Snyder '69
Khalil J. Spencer, PhD '80, '87 and Meena Sachdeva
Leonard A. Spivak, Esq. '64 and Nicole Spivak
Nancy K. Squires, PhD
Erwin P. Staller and Pearl F. Staller
Lawrence G. Stanecker
Gaynell Stone, PhD '78/'87
Frank M. Struhar
Dominick Tallarico
Deborah Toll
Carole L. Weidman (Nussbaum) and Bennett Nussbaum
Chen Ning Yang, PhD
Alice Y. Yi '79 and Peter I. Yi, MD '80
Lori A. Zaikowski, PhD '86, '91, '96
Anonymous – 9

.....

STONY BROOK UNIVERSITY TAKES US FAR BEYOND.

WE ARE THE EXPLORERS. THE CURIOUS.

We're unbound by tradition and unburdened by our journey. We're passionately engaged in the issues of our time and empowered to lead in a bold new future.

WE GO FAR BEYOND THE EXPECTED.

Thanks to you.

STONY BROOK FOUNDATION, INC.

230 Administration
Stony Brook University
Stony Brook, NY 11794-1188
P 631.632.6536

For more information, including audited financial reports visit:

WWW.STONYBROOK.EDU/FOUNDATION

